

**AYRTON | DIGITAL LIGHTING 2019**



**AYRTON**  
Digital Lighting



# DIGITAL LIGHTING

## SPOT LUMINAIRES

**MISTRAL**  
6-7

## PROFILE LUMINAIRES

**DIABLO**  
8-9

**GHIBLI**  
10-11

**KHAMSIN**  
12-13

## WASH LUMINAIRES

**MERAK**  
14-15

**LEVANTE**  
16-17

**BORA**  
18-19

**NANDOBEAM-S3**  
20-21

**NANDOBEAM-S6**  
22-23

**NANDOBEAM-S9**  
24-25

**WILDSUN-K25 TC**  
26-27

**WILDSUN-S25**  
28-29

**TECHNICAL SPECIFICATIONS**  
30-33

**WARRANTY**  
34

**CREDITS**  
34

**LEGAL**  
34



# MISTRAL

Ayrton has once again pushed the limits with Mistral™. A versatile, new fully equipped 300W spot luminaire in the same ultra-compact format as Merak. Its new 13-lens proprietary optical system delivers a 8:1 zoom ratio with a zoom range of 6.7° to 53°. The optics, equipped with a 119 mm frontal lens, can achieve an extremely uniform flat beam that can render images perfectly in all conditions and at any beam angle. Mistral comes in two versions, each to meet the specific requirements of lighting professionals. Mistral-S is designed for scenic applications. It is equipped with a new LED module, delivering powerful metallic white light with record-breaking output of 18,000 lumens and a colour temperature of 6500 K. Devised specifically for applications that require perfect

## OPTICS

- 13 elements 8:1 zoom high-resolution optic system
- Beam aperture: 6.7° to 53°
- Fast motorised linear zoom
- Tempered anti-reflective coated lenses
- 119 mm front lens for ultimate performance

## LIGHT SOURCE

### MISTRAL-S

- 26,000 lumens 8000 K white light engine
- Total luminaire output: up to 18,000 lumens
- Colour temperature output: 6500 K
- CRI: greater than 70

### MISTRAL-TC

- 21,000 lumens 7000 K white light engine
- Total luminaire output: up to 14,000 lumens
- Colour temperature output: 5700 K
- CRI: greater than 90

### MISTRAL-S & MISTRAL-TC

- Rated life (L70): up to 40,000 hours
- Flicker-free source management suitable for TV applications and all video-recorded events

## MOVEMENT

- Extremely accurate positioning
- Moving-head operated via either 8- or 16-bit resolution
- High-resolution stepper motors operated via

microprocessors ensure extreme accuracy and smooth movements

- Pan and tilt with automatic repositioning
- Moving head range: 540° (pan), 270° (tilt)

## COLOURS

- Sophisticated colour mix system providing CMY colour mixing
- Variable CTO colour temperature correction
- Fixed colour wheel with seven saturated colour filters

## GOBOS

- Indexable rotating gobo wheel with 7 high precision glass gobos plus open position
- Adjustable speed rotating gobo in both directions
- Fixed gobo wheel with 9 high precision glass gobos plus open position
- Gobo diameter: 25.0 mm
- Image diameter: 20.0 mm
- Gobo thickness: 1.1 mm

## IRIS DIAPHRAGM

- Fast iris diaphragme with adjustable dynamic effects
- Iris range : 15 to 100% open

## FROST

- Light frost filter (Heavy frost filter in option)

## EFFECTS

- Focusable graphic animation effect-wheel with continuous rotation in both directions
- 5-facet circular indexable rotating prism
- Sparkle effect: dynamic animation effect with speed and fade adjustment

## DIMMER / STROBE

- Electronic dimmer, allowing perfect light adjustment from 0 to 100% without colour variation
- Strobe effect, with speed adjustment from 1 to 25 flashes per second

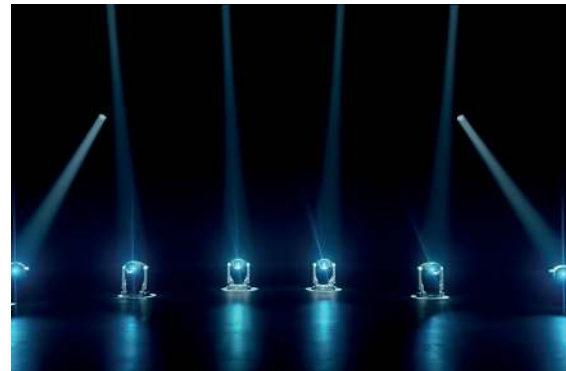
## SOFTWARE FEATURES

- Local DMX addressing of luminaire and optional parameters through its built-in LCD control panel
- Remote DMX addressing of luminaire and optional parameters through a standard RDM DMX controller
- Information menu including hour counter, temperature, software version

# 300W Spot luminaire

colour reproduction, Mistral-TC is equipped with an entirely new LED module using a monochromatic light source with a native colour rendering index greater than 90, extremely high TM30 readings and a colour temperature of 5700 K.

Feature-rich from the factory. Mistral includes a CMY colour mixing system combined with a variable CTO and a seven-position complementary colour wheel for producing an infinite palette of vivid pastels and saturated colours. The effects section includes 16 interchangeable HD glass gobos on two wheels: one rotating wheel with seven positions and one fixed wheel with nine positions. Its continuous dynamic effects wheel can be used in combination with the two gobo wheels to create unique graphical effects. Mistral also features a 15-blade iris diaphragm, a five-facet rotating prism, and a soft-edge frost filter as standard equipment. Mistral has a highly efficient phase-change liquid cooling system using a heat pipe that includes a particularly effective Silent ventilation mode, designed for studio and theatre applications.



## HARDWARE FEATURES

- Graphic LCD display for addressing and special functions settings, with flip function
- Clicking jog wheel to set functions
- Excess temperature protection
- Integrated wireless CRMX TiMo™ RDM receiver from LumenRadio™
- XLR 5 pin male and female connectors for DMX connection
- PowerCON TRUE1 male and female connectors for power connection

## CONTROL

- DMX 512 protocol, through DMX cable or a wireless system
- DMX-RDM compatible
- Stand-alone mode and Master/Slave modes
- Local control panel, with LCD display
- Choice of 3 DMX modes (from 26 to 39 DMX channels)

## POWER SUPPLY

- Electronic supply with active PFC
- 100 to 240 Volts – 50/60Hz
- Power: 450 Watt max

## COOLING SYSTEM

- Advanced liquid cooling system
- Self-adjusting variable speed fans for quiet operation (Auto mode)
- Selectable ventilation user's modes with a new Silent Mode
- Safety protection against temperatures excesses

## HOUSING

- Moving-head skeleton made of aluminium and steel metal plates
- Base in die-cast aluminium
- Heatsinks in aluminium and copper
- Moulded covers in self-extinguishing fire retardant ABS PC (V0 class)
- Two-side handles for transportation
- Four heavy-duty feet for better stability
- IP20 protection rating
- Exterior finish: black (Carbon)

## INSTALLATION

- Fastening brackets system: two Omega ¼ turn brackets designed for use with standard clamps
- Mounting points: four ¼ turn locking fittings allowing installation of Omega brackets on luminaire
- Safety cable attachment point

## OPERATING PARAMETERS

- Operating positions: all (device on floor or fixed to a support)
- Maximum permitted ambient temperature (Ta max): 45° C (113° F)
- Minimum permitted ambient temperature (Ta min): -10° C (14° F)
- Minimum usage distance: 1.5 m (4.92 ft)

## COMPLIANCE

- EMC Directive 2014/30/EU
- LVD Directive 2014/35/EU

## SIZE

- Product: 365 x 591 x 212 mm (l x h x d)
- Flight-case Foam : 450 x 620 x 280 mm (l x h x d)

## WEIGHT

- Product: 18.9 KG

## PRODUCT CODES

- 011240 : MISTRAL-S SPOT LUMINAIRE
- 011250 : MISTRAL-TC SPOT LUMINAIRE

## LEGAL

- MISTRAL is AYRTON registered Trademark
- MISTRAL is a patented model



# DIABLO

Ayrton's latest innovation, Diablo™, is a versatile, feature-rich 300-Watt profile luminaire based on the ultra-compact Mistral format. The company has taken on the ambitious challenge of making Diablo the smallest, lightest and most efficient luminaire of its category. With a record output of 19,000 lumens and a total weight of 21.8 kg, Diablo is a powerhouse of technology that will tempt the most demanding lighting designers. To achieve its objective, Ayrton has miniaturised the framing system while maximizing the performance level. As in other profile luminaires of the product line, the framing section allows accurate positioning of its four shutter blades on a 100% surface area in all positions, so that the user can frame any object regardless of the luminaire's position. A new ultra-compact high-output 550 W power supply feeds eight additional motors in the framing system, fitting into the original Mistral format.

## OPTICS

- 13-element 8:1 zoom high-resolution optic system
- Beam aperture: 6.7° to 53°
- Fast motorised linear zoom
- Tempered anti-reflective coated lenses
- 119 mm frontal lens for greater performance

## LIGHT SOURCE

### DIABLO-S

- 26,500 lumens, 8000 K white-light engine
- Total luminaire output: up to 19,000 lumens
- Colour temperature output: 6500 K
- CRI: greater than 70

### DIABLO-TC

- 20,500 lumens 7000 K white-light engine
- Total luminaire output: up to 14,000 lumens
- Colour temperature output: 5700 K
- CRI: greater than 90

### DIABLO-S & DIABLO-TC

- Rated life (L70): up to 40,000 hours
- Flicker-free source management suitable for TV applications and all video-recorded events

## MOVEMENT

- Extremely accurate positioning
- Moving-head operated with either 8- or 16-bit resolution
- High-resolution stepper motors operated via

microprocessors to ensure extreme accuracy and smooth movement

- Pan and tilt with automatic repositioning
- Moving-head range: 540° (pan), 270° (tilt)

## COLOURS

- Sophisticated colour mix system providing CMY colour mixing
- Variable CTO colour temperature correction
- Fixed colour wheel with seven complementary colours

## GOBOS

- Indexable rotating gobo wheel with 7 high-precision glass gobos, plus open position
- Adjustable-speed rotating gobo in both directions
- Gobo diameter: 25.0 mm
- Image diameter: 20.0 mm
- Gobo thickness: 1.1 mm

## FRAMING SYSTEM

- 4 individually positionable shutter blades
- Rotation of the framing system module: +/- 45°

## IRIS DIAPHRAGM

- Fast iris diaphragm with adjustable dynamic effects
- Iris range: 15% to 100% open

## FROST

- Heavy frost filter
- Light frost filter (optional)

## EFFECTS

- Graphic animation effect-wheel with continuous rotation in both directions
- 5-facet circular indexable rotating prism
- Sparkle effect: dynamic animation effect with speed and fade adjustment

## DIMMER / STROBE

- Electronic dimmer, allowing perfect light adjustment from 0 to 100% without colour variation
- White or colour strobe effect, with speed adjustment from 1 to 25 flashes per second

## SOFTWARE FEATURES

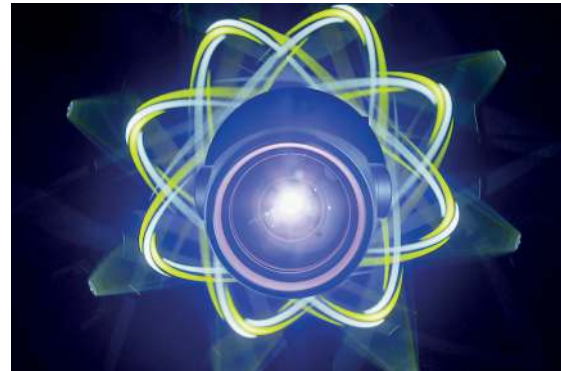
- Local DMX addressing of luminaire and optional parameters through a built-in LCD control panel
- Remote DMX addressing of luminaire and optional parameters through a standard RDM DMX controller
- Information menu including hour counter, temperature, software version



# 300W Profile luminaire

Diablo borrows the same 13-element proprietary optical system delivering an 8:1 zoom ratio with a zoom range of 6.7° to 53°. The 119 mm frontal lens can produce an extremely uniform flat beam that can render images perfectly in all conditions and at any beam angle.

Diablo is available in two versions: S and TC. Diablo-S, specially designed for stage applications, is equipped with a monochromatic LED light source that can generate extremely high output and metallic white light calibrated at 6500 K. Diablo-TC is geared for applications that require perfect colour rendition, using a monochromatic light source with a native colour rendering index greater than 90 and high TM30 readings, at a colour temperature of 5700 K. Fully equipped at the factory, Diablo includes a CMY colour mixing system combined with a progressive CTO and a wheel with seven complementary colours that produces an infinite palette of bright pastels and saturated colours. The effects section includes a wheel with seven interchangeable HD glass gobos, a continuous dynamic effects wheel, a 15-blade iris diaphragm, a heavy frost filter and a five-facet circular rotating prism. Diablo has a highly efficient phase-change liquid cooling system using a heat pipe that includes a particularly effective ultra-silent ventilation mode, perfect for stage and studio applications.



## HARDWARE FEATURES

- Graphic LCD display for addressing and special functions settings, with flip function
- Clicking jog wheel to set functions
- Excess-temperature protection
- Integrated wireless CRMX TiMo™ RDM receiver from LumenRadio™
- XLR 5-pin male and female connectors for DMX connection
- PowerCON TRUE1 male and female connectors for power connection

## CONTROL

- DMX 512 protocol, through DMX cable or a wireless system
- DMX-RDM compatible
- Stand-alone mode and Master/Slave modes
- Local control panel, with LCD display
- Choice of 3 DMX modes (from 36 to 56 DMX channels)

## POWER SUPPLY

- Electronic supply with active PFC
- 100 to 240 Volts – 50/60Hz
- Power: 550 W maximum

## COOLING SYSTEM

- Advanced liquid cooling system
- Self-adjusting variable speed fans for quiet operation (Auto mode)
- Selectable ventilation user modes including a new Silent Mode
- Safety protection against temperatures excesses

## HOUSING

- Moving-head skeleton made of aluminium and steel metal plates
- Base in die-cast aluminium
- Aluminium and copper heatsinks
- Moulded covers in self-extinguishing fire retardant ABS PC (V0 class)
- Two-side handles for transportation
- Four heavy-duty feet for better stability
- IP20 protection rating
- Exterior finish: black (Carbon)

## INSTALLATION

- Fastening-bracket system: two Omega ¼ turn brackets designed for use with standard clamps
- Mounting points: four ¼ turn locking fittings allowing installation of Omega brackets on luminaire
- Safety-cable attachment point

## OPERATING PARAMETERS

- Operating positions: all (device on floor or fixed to a support)
- Maximum permitted ambient temperature (Ta max): 45° C (113° F)
- Minimum permitted ambient temperature (Ta min): -10° C (14° F)
- Minimum usage distance: 1.5 m (4.92 ft)

## COMPLIANCE

- EMC Directive 2014/30/EU
- LVD Directive 2014/35/EU

## SIZE

- Product: 365 x 591 x 212 mm (l x h x d)
- Flight-case foam: 430 x 660 x 280 mm (l x h x d)

## WEIGHT

- Product: 21.8 KG

## PRODUCT CODES

- 011340: DIABLO-S PROFILE LUMINAIRE
- 011350: DIABLO-TC PROFILE LUMINAIRE

## LEGAL

- DIABLO is AYRTON registered Trademark
- DIABLO is a patented model



# GHIBLI

Ghibli™ is Ayrton's first LED spot luminaire that is factory-equipped with a framing system designed to offer lighting designers unlimited creative possibilities without any compromise. Fitted with a LED module using a high-output, low-etendue monochromatic light source calibrated at 6500 K, Ghibli delivers light output of 23,000 lumens in a highly compact format. The proprietary optical system, equipped with a 137mm frontal lens, has 13 high-quality lenses, delivering an 8:1 zoom ratio and a zoom range of 7° to 56°. The optics produce an extremely uniform fat beam with no hot spot. The selection of gobos and colours was made in collaboration with lighting designers to meet the needs of the entertainment industry.

## OPTICS

- 13 elements 8:1 zoom high-resolution optic system
- Beam aperture: 7° to 56°
- Fast motorised linear zoom
- Tempered anti-reflective coated lenses
- 137 mm frontal lens for greater performance

## LIGHT SOURCE

### GHIBLI-S

- 36,000 lumens 8000 K white light engine
- Total luminaire output: up to 23,000 lumens
- Colour temperature output: 6500 K
- CRI: greater than 70

### GHIBLI-TC

- 26,000 lumens 7000 K white light engine
- Total luminaire output: up to 17,000 lumens
- Colour temperature output: 5700 K
- CRI: greater than 90

### GHIBLI-S & GHIBLI-TC

- Rated life (L70): up to 40,000 hours
- Flicker-free source management suitable for TV applications and all video-recorded events

## MOVEMENT

- Extremely accurate positioning
- Moving-head operated via either 8- or 16-bit resolution
- High-resolution stepper motors operated via

microprocessors to ensure extreme accuracy and smooth movement

- Pan and tilt with automatic repositioning
- Moving-head range: 540° (pan), 270° (tilt)

## COLOURS

- Sophisticated colour mix system providing CMY colour mixing
- Variable CTO colour temperature correction
- Fixed colour wheel with six complementary colours and High CRI filter

## GOBOS

- Indexable rotating gobo wheels with 7 high-precision glass gobos, plus open position
- Adjustable-speed rotating gobo in both directions
- Fixed gobo wheel with 8 high-precision glass gobos, plus open position
- Gobo diameter: 30.0 mm
- Image diameter: 22.0 mm
- Gobo thickness: 1.1 mm

## FRAMING SYSTEM

- 4 individually positionable shutter blades on a 100% surface area in all positions
- Rotation of the framing system module: +/- 45°

## IRIS DIAPHRAGM

- Fast iris diaphragm with adjustable dynamic effects
- Iris range: 15% to 100% open

## FROST

- 2 frost filters: one light, one heavy

## EFFECTS

- Graphic animation effect-wheel with continuous rotation in both directions
- 5-facet circular rotating and indexable prism
- Sparkle effect: dynamic animation effect with speed and fade adjustment

## DIMMER / STROBE

- Electronic dimmer, allowing perfect light adjustment from 0 to 100% without colour variation
- Strobe effect, with speed adjustment from 1 to 25 flashes per second

## SOFTWARE FEATURES

- Local DMX addressing of luminaire and optional parameters through its built-in LCD control panel
- Remote DMX addressing of luminaire and optional parameters through a standard RDM DMX controller
- Information menu including hour counter, temperature, software version

# 600W Profile luminaire

Ayrton has concentrated its expertise into one, single fixture Ghibli to offer you a maximum of possibilities. Think versatile. Think Ghibli. Standard features on Ghibli include a CMY colour mixing system combined with a variable CTO and a six-position complementary colour wheel to produce in an infinite palette of pastels and saturated colours. The luminaire is fitted with an entirely new filter for optimising the colour rendering index. The framing system allows each frame to be positioned with precision on a 100% surface area in all positions. The effects section includes two wheels with interchangeable HD glass gobos: one with seven rotating and the other with eight fixed gobos; a continuous dynamic effects wheel; an iris diaphragm; two frost filters and a five-facet rotating prism. Ghibli is equipped with a new, highly effective phase-change liquid cooling system using a heat pipe.



## HARDWARE FEATURES

- Graphic LCD display for addressing and special functions settings, with flip function
- Clicking jog wheel to set functions
- Excess temperature protection
- Integrated wireless CRMX TiMo™ RDM receiver from LumenRadio™
- XLR 5 pin male and female connectors for DMX connection
- Ethercon RJ45 IN / OUT connectors for ArtNet™ connection
- PowerCON TRUE1 male connector for power connection

## CONTROL

- DMX 512 protocol, through DMX cable or a wireless system
- DMX-RDM compatible
- Stand-alone mode and Master/Slave modes
- ArtNet™ & sACN protocol through Ethernet cable
- Local control panel, with LCD display
- Choice of 3 DMX modes (from 34 to 58 DMX channels)

## POWER SUPPLY

- Electronic supply with active PFC
- 100 to 240 Volts – 50/60Hz
- Power: 800 Watt max

## COOLING SYSTEM

- Advanced liquid cooling system
- Self-adjusting variable speed fans for quiet operation (Auto mode)
- Selectable ventilation user's modes with a new Silent Mode
- Safety protection against temperatures excesses

## HOUSING

- Moving-head skeleton made of aluminium and steel metal plates
- Base in die-cast aluminium
- Heatsinks in aluminium and copper
- Moulded covers in self-extinguishing fire retardant ABS PC (V0 class)
- Two-side handles for transportation
- Four heavy-duty feet for better stability
- IP20 protection rating
- Exterior finish: black (Carbon)

## INSTALLATION

- Fastening brackets system: two Omega ¼ turn brackets designed for use with standard clamps
- Mounting points: eight ¼ turn locking fittings allowing installation of Omega brackets on luminaire
- Safety cable attachment point

## OPERATING PARAMETERS

- Operating positions: all (device on floor or fixed to a support)
- Maximum permitted ambient temperature (Ta max): 45° C (113° F)
- Minimum permitted ambient temperature (Ta min): -10° C (14° F)
- Minimum usage distance: 2.0 m (6.56 ft)

## COMPLIANCE

- EMC Directive 2014/30/EU
- LVD Directive 2014/35/EU

## SIZE

- Product: 468 x 734 x 280 mm (l x h x d)
- Flight-case foam: 655 x 590 x 555 mm (l x h x d)

## WEIGHT

- Product: 35.6 KG

## PRODUCT CODES

- 011450: GHIBLI-S PROFILE LUMINAIRE
- 011460: GHIBLI-TC PROFILE LUMINAIRE

## LEGAL

- GHIBLI is AYRTON registered Trademark
- GHIBLI is a patented model



# KHAMSIN

Ayrton has once again pushed the limits with a newly designed “profile” luminaire... Khamsin™... squeezing a 750-Watt L.E.D. module into the highly compact Ghibli format, while offering 60% more light output. To make the luminaire this compact, Ayrton has completely redesigned its internal structure by using cast aluminium sides. The size of the cooling system also had to be dramatically reduced and made even more efficient. This high-end luminaire also features a double rotating gobo wheel on a single axis that will allow you to achieve astonishing high-definition morphing effects. Like all luminaires in the Ayrton product line, Khamsin is available in two versions: Khamsin-S is designed for scenic applications. It is equipped with a new LED module, delivering powerful metallic white light with record-breaking output of 40,000 lumens and a colour temperature of 6500 K. Devised specifically for applications that require perfect colour reproduction, Khamsin-TC is equipped with an entirely new LED module using

## OPTICS

- 13 elements 8:1 zoom high-resolution optic system
- Beam aperture: 7° to 58°
- Fast motorised linear zoom
- Tempered anti-reflective coated lenses
- 158 mm frontal lens for greater performance

## LIGHT SOURCE

### KHAMSIN-S

- 60,000 lumens 8000 K white light engine
- Total luminaire output: up to 40,000 lumens
- Colour temperature output: 6500 K
- CRI: greater than 70

### KHAMSIN-TC

- 48,000 lumens 7000 K white light engine
- Total luminaire output: up to 31,000 lumens
- Colour temperature output: 5700 K
- CRI: greater than 90

### KHAMSIN-S & KHAMSIN-TC

- Rated life (L70): up to 40,000 hours
- Flicker-free source management suitable for TV applications and all video-recorded events

## MOVEMENT

- Extremely accurate positioning
- Moving-head operated via either 8- or 16-bit resolution
- High-resolution stepper motors operated via

microprocessors to ensure extreme accuracy and smooth movement

- Pan and tilt with automatic repositioning
- Moving-head range: 540° (pan), 270° (tilt)

## COLOURS

- Sophisticated colour mix system providing CMY colour mixing
- Variable CTO colour temperature correction
- Fixed colour wheel with six complementary colours

## GOBOS

- 2 indexable rotating gobo wheels with 6 high-precision glass gobos, plus open position
- Adjustable-speed rotating gobo in both directions
- Gobo diameter: 34.0 mm
- Image diameter: 24.0 mm
- Gobo thickness: 1.1 mm

## FRAMING SYSTEM

- 4 individually positionable shutter blades on a 100% surface area in all positions
- Rotation of the framing system module: +/- 45°

## IRIS DIAPHRAGM

- Fast iris diaphragm with adjustable dynamic effects
- Iris range: 15% to 100% open

## FROST

- 2 frost filters: one light, one heavy

## EFFECTS

- Focusable graphic animation effect-wheel with continuous rotation in both directions
- 2 rotating and indexable prisms: one 5-facet circular, one 4-facet linear
- Sparkle effect: dynamic animation effect with speed and fade adjustment

## DIMMER / STROBE

- Electronic dimmer, allowing perfect light adjustment from 0 to 100% without colour variation
- Strobe effect, with speed adjustment from 1 to 25 flashes per second

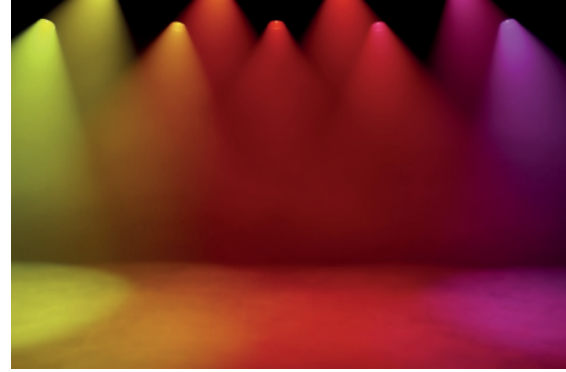
## SOFTWARE FEATURES

- Local DMX addressing of luminaire and optional parameters through its built-in LCD control panel
- Remote DMX addressing of luminaire and optional parameters through a standard RDM DMX controller
- Information menu including hour counter, temperature, software version

# 750W Profile luminaire

a monochromatic light source with a native colour rendering index greater than 90, extremely high TM30 readings and a colour temperature of 5700 K.

In its quest for perfection, Ayrton has developed a fixture that will turn heads. With such a versatile and compact luminaire you can only imagine the creative possibilities! The proprietary optical system, fitted with 13 lenses, features a 158 mm frontal lens and delivers an 8:1 zoom ratio and a zoom range of 7° to 58°. The high-quality optics offer excellent image reproduction and produce an extremely uniform flat beam with no hot spot, ensuring a perfectly homogeneous colour mix regardless of the colour combination selected. Feature-rich from the factory, Khamsin includes a CMY colour mixing system, which, combined with a variable CTO and one wheel with six complementary colours, produces an infinite palette of vivid pastels and saturated colours. The framing section allows accurate positioning of four shutter blades on a 100% surface area in all positions, so that the user can frame any object regardless of the luminaire's position. The effects section includes two wheels with six interchangeable HD glass gobos; a continuous dynamic effects wheel; a 15-blade iris diaphragm; two frost filters: one light frost, one heavy frost; two rotating prisms: one circular with 5 facets, one linear with 4 facets. Khamsin is the perfect lighting solution for large venues, such as arenas and stadiums dedicated to major events.



## HARDWARE FEATURES

- Graphic LCD display for addressing and special functions settings, with flip function
- Clicking jog wheel to set functions
- Excess temperature protection
- Integrated wireless CRMX TiMo™ RDM receiver from LumenRadio™
- XLR 5 pin male and female connectors for DMX connection
- Ethercon RJ45 IN / OUT connectors for ArtNet™ connection
- PowerCON TRUE1 male connector for power connection

## CONTROL

- DMX 512 protocol, through DMX cable or a wireless system
- DMX-RDM compatible
- Stand-alone mode and Master/Slave modes
- ArtNet™ & sACN protocol through Ethernet cable
- Local control panel, with LCD display
- Choice of 3 DMX modes (from 39 to 63 DMX channels)

## POWER SUPPLY

- Electronic supply with active PFC
- 100 to 240 Volts – 50/60Hz
- Power: 1,150 Watt max

## COOLING SYSTEM

- Advanced liquid cooling system
- Self-adjusting variable speed fans for quiet operation (Auto mode)
- Selectable ventilation user's modes with a new Silent Mode
- Safety protection against temperatures excesses

## HOUSING

- Moving-head skeleton made of aluminium and steel metal plates
- Base in die-cast aluminium
- Heatsinks in aluminium and copper
- Moulded covers in self-extinguishing fire retardant ABS PC (V0 class)
- Two-side handles for transportation
- Four heavy-duty feet for better stability
- IP20 protection rating
- Exterior finish: black (Carbon)

## INSTALLATION

- Fastening brackets system: two Omega ¼ turn brackets designed for use with standard clamps
- Mounting points: eight ¼ turn locking fittings allowing installation of Omega brackets on luminaire
- Safety cable attachment point

## OPERATING PARAMETERS

- Operating positions: all (device on floor or fixed to a support)
- Maximum permitted ambient temperature (Ta max): 45° C (113° F)
- Minimum permitted ambient temperature (Ta min): -10° C (14° F)
- Minimum usage distance: 2.0 m (6.56 ft)

## COMPLIANCE

- EMC Directive 2014/30/EU
- LVD Directive 2014/35/EU

## SIZE

- Product: 494 x 778 x 280 mm (l x h x d)
- Flight-case foam: 655 x 590 x 555 mm (l x h x d)

## WEIGHT

- Product: 39.8 KG

## PRODUCT CODES

- 011640: KHAMSIN-S PROFILE LUMINAIRE
- 011650: KHAMSIN-TC PROFILE LUMINAIRE

## LEGAL

- KHAMSIN is AYRTON registered Trademark
- KHAMSIN is a patented model



# MERAK

Ayrton's new Merak™CS is a powerhouse of technology that features a proprietary 10:1 optical zoom system, combined with a 250-Watt low-etendue, RGBW multichip LED module. The 7° to 70° zoom employs light pipe technology paired with a new textured Fresnel lens design to ensure perfectly homogenous colour mixing regardless of the colour combination selected. With its single-source transmitting lens, Merak-CS casts wonderfully crisp light and shadows. The fixture is also equipped with a de-focusable rotating beam shaping optic.

## OPTICS

- 10:1 zoom optic system
- Beam aperture: 7° to 70°
- Fast motorised linear zoom
- 168 mm textured fresnel lens for greater performance

## LIGHT SOURCE

- 1 multi-chip 250 Watt RGBW LED sources
- Total luminaire output: up to 4,500 lumens
- Luminous intensity: 200,000 cd (narrow angle)
- CRI: up to 86
- Rated life (L70): up to 40,000 hours
- Flicker free sources management suitable for TV applications and all video-recorded events

## MOVEMENT

- Extremely accurate positioning
- Moving head operated via either 8- or 16-bit resolution
- High-resolution stepper motors operated via microprocessors to ensure extreme accuracy and smooth movements
- Pan and tilt with automatic repositioning
- Moving-head range: 540° (pan), 270° (tilt)

## COLOURS

- Sophisticated 4 colours RGBW mixed
- Uniform light beam with no colour shadows, and rich saturated and pastel colour-hues
- 4.29 billion colours (8 bit resolution)
- Virtual colour wheel, including most usuals white colour temperature presets
- Dynamic colour macro effect with variable speed

## EFFECTS

- Indexable de-focusable rotating beam shaping optic

## DIMMER / STROBE

- Electronic dimmer, allowing perfect light adjustment from 0 to 100% without colour variation
- White or colour strobe effect, with speed adjustment from 1 to 25 flashes per second

## SOFTWARE FEATURES

- Local DMX addressing of the luminaire and optional parameters through its built-in LCD panel control
- Remote DMX addressing of the luminaire and optional parameters through a standard RDM DMX controller
- Information menu including hour counter, temperature, software version

## HARDWARE FEATURES

- Graphic LCD display for addressing and special functions settings, with flip function
- Clicking jog wheel to set the functions
- Excess temperature protection
- Integrated LumenRadio™ wireless CRMX TiMo™ RDM receiver
- XLR 5 pin male and female connectors for DMX connection
- PowerCON TRUE1 male and female connectors for power connection

# 250W Wash luminaire

Merak-CS puts new technology to great use with a next-generation power supply that incorporates active power factor correction (PFC) and a DC/DC converter in an ultra compact module for more than 95 percent efficiency. A new liquid cooling system is also employed, which permits the fixture to operate in all positions. These innovations allow the LED emitters to be run at full power continuously without any loss of performance. To celebrate Ayrton's 15th Anniversary, Merak-CS presents a sleeker, updated, industrial design, with perfectly straightened yoke arms, and minimalist base, as well as a new menu navigation system using a single control wheel. Merak-CS can be controlled via DMX-512 w/RDM, or a wireless link using CRMX TiMo RDM from LumenRadio™.



## CONTROL

- DMX 512 protocol, through DMX cable or wireless system
- DMX-RDM compatible
- Stand-alone mode and Master/Slave modes
- Local control panel, with LCD display
- Choice of 3 DMX modes (from 17 to 22 DMX channels)

## POWER SUPPLY

- Electronic supply with active PFC
- 100 to 240 Volts – 50/60Hz
- Power 400 Watt max

## COOLING SYSTEM

- Advanced liquid cooling system
- Self adjusting variable speed fans for quiet operation (Auto mode)
- Selectable auto, stage & studio ventilation modes
- Safety protection against temperatures excesses

## HOUSING

- Moving-head skeleton made of aluminium and steel metal plates
- Base in die-cast aluminium
- Heatsinks in aluminium and copper
- Moulded covers in self-extinguishing fire retardant ABS PC (V0 class)
- Two sides handles for transportation
- Four strong feet for better stability
- IP20 protection rating
- Exterior finish: black (Carbon)

## INSTALLATION

- Fastening brackets system: two Omega ¼ turn brackets designed for use with standard clamps
- Mounting points: four ¼ turn locking fittings allowing installation of Omega brackets on luminaire
- Safety-cable attachment point

## OPERATING PARAMETERS

- Operating positions: all (device on floor or fixed to a support)
- Maximum permitted ambient temperature (Ta max): 45°C (113°F)
- Minimum permitted ambient temperature (Ta min): -10°C (14°F)
- Minimum usage distance: 0.5 m (1.64 ft)

## COMPLIANCE

- EMC Directive 2014/30/EU
- LVD Directive 2014/35/EU

## SIZE

- Product: 365 x 555 x 385 mm (l x h x d)
- Flight-case foam: 450 x 585 x 280 mm (l x h x d)

## WEIGHT

- Product: 13.8 KG

## PRODUCT CODES

- 010150: MERAK-CS WASH LUMINAIRE

## LEGAL

- MERAK is AYRTON registered Trademark
- MERAK is a patented model



# LEVANTE

Ayrton now introduces Levante™, a dramatically miniaturised version of the Bora wash light, and using the same radical concept, has endowed it with outstanding performance capabilities in the confines of an ultra-compact format. Levante is a marvel of technology that will attract the most demanding lighting designers. The “S” version, weighing only 22 kg, can deliver light output greater than 20,000 lumens while consuming only 300 Watts. Fitted with a spherical frontal 138 mm lens, the proprietary optical system, using 13 lenses and developed specifically for wash-type applications, features a zoom ratio of over a 9:1 and an impressive zoom range from 6.3° to 58°. The optics produce an extremely uniform flat beam with no hot spot, ensuring a perfect colour mix regardless of the colour combination selected. Ayrton has created a wash luminaire that can actually sculpture light and added a high-transmission diffusion filter to the zoom lens

## OPTICS

- 13-element 9:1 zoom high-resolution optic system
- Beam aperture: 6.3° to 58°
- High-speed motorised linear zoom
- Tempered anti-reflective coated lenses
- 138 mm frontal lens for greater performance

## LIGHT SOURCE

### LEVANTE-S

- 26,500 lumen, 8000 K white light engine
- Total luminaire output: up to 20,000 lumens
- Colour temperature output: 6500 K
- CRI: greater than 70

### LEVANTE-TC

- 20,500-lumen 7000 K white light engine
- Total luminaire output: up to 15,000 lumens
- Colour temperature output: 5700 K
- CRI: greater than 90

### LEVANTE-S & LEVANTE-TC

- Rated life (L70): up to 40,000 hours
- Flicker-free source management suitable for TV applications and all video-recorded events

## MOVEMENT

- Highly accurate positioning
- Moving-head operated via either 8- or 16-bit resolution
- High-resolution stepper motors operated via

microprocessors to ensure extreme accuracy and smooth movement

- Pan and tilt with automatic repositioning
- Moving-head range: 540° (pan), 270° (tilt)

## COLOURS

- Sophisticated colour mix system providing CMY colour mixing
- Variable CTO colour temperature correction
- Fixed colour wheel with seven complementary colours

## GOBOS

- 1 indexable rotating gobo wheel with 7 metallic gobos, plus an open position
- Adjustable-speed rotating gobo in both directions
- Gobo diameter: 25.0 mm
- Image diameter: 19.0 mm

## BARNDOORS

- 4 individually positionable shutter blades on a 100% surface area in all positions
- Rotation of the barndoor system module: +/- 45°

## IRIS DIAPHRAGM

- Fast iris diaphragm with adjustable dynamic effects
- Iris range: 15% to 100% open

## FROST

- 0% to 100% variable linear frost

## EFFECTS

- Sparkle effect: dynamic animation effect with speed and fade adjustment

## DIMMER / STROBE

- Electronic dimmer, allowing perfect light adjustment from 0 to 100% without colour variation
- White or colour strobe effect, with speed adjustment from 1 to 25 flashes per second

## SOFTWARE FEATURES

- Local DMX addressing of luminaire and optional parameters through its built-in LCD control panel
- Remote DMX addressing of luminaire and optional parameters through a standard RDM DMX controller
- Information menu including hour counter, temperature, software version



# 300W Wash luminaire

group to erase the edge of the beam without changing its angle. A variable linear frost system was developed to let the user adjust the desired diffusion level with precision. A new barndoors module allows the four shutter blades to be freely positioned on 100% of the surface area so that any object can be framed regardless of the luminaire's position.

Levante is available in two versions: the S and the TC. The S version can produce ultra high output, generating metallic white light calibrated at 6500 K and is specially designed for stage applications. The TC version, geared for situations that require perfect colour rendition, has a native colour rendering index greater than 90 and high TM30 readings. Feature-rich from the factory, Levante is not only equipped with a barndoor module but also a CMY colour mixing system, which, combined with a variable CTO and a wheel with seven complementary colours, produces an infinite palette of vivid pastels and saturated colours. A 15-blade iris diaphragm and a wheel with seven indexable rotating gobos are supplied as standard equipment. A new ultra-compact high-output 550 W power supply feeds eight additional motors in the barndoor system, fitting into the same format as Mistral. Levante has a highly efficient phase-change liquid cooling system using a heat pipe that includes a particularly effective ultra-silent ventilation mode, designed for stage and studio applications.



## HARDWARE FEATURES

- Graphic LCD display for addressing and special functions settings, with flip function
- Clicking jog wheel to set functions
- Excess-temperature protection
- Integrated wireless CRMX TiMo™ RDM receiver from LumenRadio™
- XLR 5 pin male and female connectors for DMX connection
- PowerCON TRUE1 male and female connectors for power connection

## CONTROL

- DMX 512 protocol, through DMX cable or a wireless system
- DMX-RDM compatible
- Stand-alone mode and Master/Slave modes
- Local control panel, with LCD display
- Choice of 3 DMX modes (from 31 to 52 DMX channels)

## POWER SUPPLY

- Electronic supply with active PFC
- 100 to 240 Volts – 50/60Hz
- Power: 550 W maximum

## COOLING SYSTEM

- Advanced liquid cooling system
- Self-adjusting variable speed fans for quiet operation (Auto mode)
- Selectable ventilation user modes with a new Silent Mode
- Safety protection against temperature excesses

## HOUSING

- Moving-head skeleton made of aluminium and steel plates
- Base in die-cast aluminium
- Heatsinks in aluminium and copper
- Moulded covers in self-extinguishing fire retardant ABS PC (V0 class)
- Two-side handles for transportation
- Four heavy-duty feet for better stability
- IP20 protection rating
- Exterior finish: black (Carbon)

## INSTALLATION

- Fastening brackets system: two Omega ¼ turn brackets designed for use with standard clamps
- Mounting points: four ¼ turn locking fittings allowing installation of Omega brackets on luminaire
- Safety cable attachment point

## OPERATING PARAMETERS

- Operating positions: all (device on floor or fixed to a support)
- Maximum permitted ambient temperature (Ta max): 45° C (113° F)
- Minimum permitted ambient temperature (Ta min): -10° C (14° F)
- Minimum usage distance: 1.5 m (4.92 ft)

## COMPLIANCE

- EMC Directive 2014/30/EU
- LVD Directive 2014/35/EU

## SIZE

- Product: 365 x 591 x 212 mm (l x h x d)
- Flight-case foam: 430 x 660 x 280 mm (l x h x d)

## WEIGHT

- Product: 22.0 KG

## PRODUCT CODES

- 010240: LEVANTE-S AUTOMATED WASH LUMINAIRE
- 010250: LEVANTE-TC AUTOMATED WASH LUMINAIRE

## LEGAL

- LEVANTE is AYRTON registered Trademark
- LEVANTE is a patented model



# BORA

Ayrton has developed Bora™, its new feature-packed 750 W wash luminaire, using a radical approach. Its specific function is to establish the perfect atmosphere for your creative design. Fitted with a frontal 178 mm spherical lens, the proprietary optical system using 13 high-quality lenses was developed specifically for “wash” applications. It features an 8:1 zoom ratio for a wide zoom range from 8° to 64°. The optics produces an extremely uniform flat beam with no hot spot, ensuring a perfectly homogeneous colour mix regardless of the colour combination selected. Bora comes in two versions, each to meet the specific requirements of lighting professionals. Bora-S is designed for scenic applications. It is equipped with a new LED module calibrated at 8000 K, delivering powerful metallic white light with record-breaking output of 42,000 lumens. Devised specifically for applications that require perfect

## OPTICS

- 13 element 8:1 zoom in high-resolution optic system
- Beam aperture: 8° to 64°
- Fast motorised linear zoom
- Tempered anti-reflective coated lenses
- 178 mm frontal lens for greater performance

## LIGHT SOURCE

### BORA-S

- 60,000 lumens 8000 K white light engine
- Total luminaire output: up to 42,000 lumens
- Colour temperature output: 6500 K
- CRI: greater than 70

### BORA-TC

- 48,000 lumens 7000 K white light engine
- Total luminaire output: up to 31,000 lumens
- Colour temperature output: 5700 K
- CRI: greater than 90

### BORA-S & BORA-TC

- Rated life (L70): up to 40,000 hours
- Flicker free sources management suitable for TV applications and all video-recorded events

## MOVEMENT

- Extremely accurate positioning
- Moving head operated via either 8- or 16-bit resolution
- High-resolution stepper motors operated via

microprocessors to ensure extreme accuracy and smooth movements

- Pan and tilt with automatic repositioning
- Moving-head range: 540° (pan), 270° (tilt)

## COLOURS

- Sophisticated colour mix system providing CMY colour mixing
- Variable CTO colour temperature correction
- 2 fixed colour wheels with six complementary colours each

## GOBOS

- Indexable rotating gobo wheel with 6 gobos plus open position
- Adjustable-speed rotating gobo in both directions
- Gobo diameter: 34.0 mm
- Image diameter: 25.0 mm

## BARNDOORS

- 4 individually positionable shutter blades on a 100% surface area in all positions
- Rotation of the framing system module: +/- 45°

## IRIS DIAPHRAGM

- Fast iris diaphragm with adjustable dynamic effects
- Iris range: 15% to 100% open

## FROST

- 0% to 100% variable linear frost

## DIMMER / STROBE

- Electronic dimmer, allowing perfect light adjustment from 0 to 100% without colour variation
- Strobe effect, with speed adjustment from 1 to 25 flashes per second

## SOFTWARE FEATURES

- Local DMX addressing of luminaire and optional parameters through its built-in LCD control panel
- Remote DMX addressing of luminaire and optional parameters through a standard RDM DMX controller
- Information menu including hour counter, temperature, software version

## HARDWARE FEATURES

- Graphic LCD display for addressing and special functions settings, with flip function
- Clicking jog wheel to set functions
- Excess temperature protection
- Integrated LumenRadio™ wireless CRMX TiMo™ RDM receiver
- XLR 5 pin male and female connectors for DMX connection
- Ethercon RJ45 IN / OUT connectors for ArtNet™ connection
- PowerCON TRUE1 male connector for power connection

# 750W Wash luminaire

colour reproduction, Bora-TC is equipped with an entirely new LED module using a monochromatic light source calibrated at 7000 K with a native colour rendering index greater than 90, and extremely high TM30 readings.

Wonderfully sleek and compact, Bora-S and Bora-TC are examples of meticulous workmanship. Feature-rich from the factory, Bora includes a CMY colour mixing system, which, combined with a variable CTO and two wheels with six complementary colours each, produces an infinite palette of vivid pastels and saturated colours. The framing section allows accurate positioning of four shutter blades on a 100% surface area in all positions, so that the user can frame any object regardless of the luminaire's position. Bora is also factory-equipped with a wheel holding six rotating gobos specially designed for wash-type applications, a variable linear frost and a 15-blade iris diaphragm. Like all Ayrton luminaires, Bora has a phase-change liquid cooling system using a heat pipe that includes a particularly effective silent ventilation mode. Bora comes in two variants to accommodate all types of professional use. Bora-S is particularly suitable for situations requiring a great deal of light output such as concerts or other live entertainment. Designed for total versatility, Bora-TC is ideal for applications that call for impeccable colour reproduction, such as fashion shows or car shows.



## CONTROL

- DMX 512 protocol, through DMX cable or wireless system
- DMX-RDM compatible
- Stand-alone mode and Master/Slave modes
- ArtNet™ & sACN protocol through Ethernet cable
- Local control panel, with LCD display
- Choice of 3 DMX modes (from 30 to 52 DMX channels)

## POWER SUPPLY

- Electronic supply with active PFC
- 100 to 240 Volts – 50/60Hz
- Power: 1,150 Watt max

## COOLING SYSTEM

- Advanced liquid cooling system
- Self-adjusting variable speed fans for quiet operation (Auto mode)
- Selectable ventilation user's modes with a new Silent Mode
- Safety protection against temperatures excesses

## HOUSING

- Moving-head skeleton made of aluminium and steel metal plates
- Base in die-cast aluminium
- Heatsinks in aluminium and copper
- Moulded covers in self-extinguishing fire retardant ABS PC (V0 class)
- Two-side handles for transportation
- Four heavy-duty feet for better stability
- IP20 protection rating
- Exterior finish: black (Carbon)

## INSTALLATION

- Fastening brackets system: two Omega ¼ turn brackets designed for use with standard clamps
- Mounting points: eight ¼ turn locking fittings allowing installation of Omega brackets on luminaire
- Safety-cable attachment point

## OPERATING PARAMETERS

- Operating positions: all (device on floor or fixed to a support)
- Maximum permitted ambient temperature (Ta max): 45° C (113° F)
- Minimum permitted ambient temperature (Ta min): -10° C (14° F)
- Minimum usage distance: 2.0 m (6.56 ft)

## COMPLIANCE

- EMC Directive 2014/30/EU
- LVD Directive 2014/35/EU

## SIZE

- Product: 494 x 737 x 280 mm (l x h x d)
- Flight-case foam: 655 x 590 x 555 mm (l x h x d)

## WEIGHT

- Product: 37.8 KG

## PRODUCT CODES

- 010640: BORA-S WASH LUMINAIRE
- 010650: BORA-TC WASH LUMINAIRE

## LEGAL

- BORA is AYRTON registered Trademark
- BORA is a patented model

# NANDOBEAM-S3

NandoBeam™S3 is a powerful and ultra-fast moving-head in a compact housing. Its advanced and highly efficient proprietary optical system, coupled with state-of-the-art 15 Watt RGBW LED emitters, delivers an 8° narrow beam as well as 40° wide coverage. The quality of its colour-mixing makes the NandoBeam-S3 capable of handling even the most demanding environments. The choice of light sources and colour selection was made in collaboration with lighting designers to meet the needs of the entertainment industry. The main benefit of the optical zoom system, which was developed especially for the NandoBeam



## OPTICS

- 2 elements 5:1 zoom high-resolution optic system
- Beam aperture: 8° to 40°
- Fast motorised linear zoom
- 170 mm front lenses cluster

## LIGHT SOURCE

- 19 x 500 lumens RGBW High-Power LED sources
- Total luminaire output: up to 4,000 lumens
- Rated life (L70): up to 40,000 hours
- Flicker free sources management, suitable for TV applications and all video recorded events

## MOVEMENT

- Extremely accurate positioning
- Moving-head operated via either 8- or 16-bit resolution
- High-resolution stepper motors operated via microprocessors ensure extreme accuracy and smooth movements.
- Pan and tilt with automatic repositioning
- Moving-head range : 540° (pan), 270° (tilt)

## COLOURS

- Sophisticated 4 colours RGBW mixed, reaching high Colour
- Rendering Index
- Uniform light beam with no colour shadows, and rich saturated and pastel colour-hues
- 4.29 billion colours (8 bit resolution)
- Virtual colour wheel, including most usuals white colour temperature presets
- Dynamic colour macro effect with variable speed

## EFFECTS

- Graphical effects capabilities
- Effects can be coupled with beam, wash or matrix applications
- Built-in pattern effects with speed and fade controls for scenic applications

## DIMMER / STROBE

- Electronic dimmer, allowing perfect light adjustment from 0 to 100% without colour variation
- White or colour strobe effect, with speed adjustment from 1 to 25 flashes per second

## SOFTWARE FEATURES

- Local DMX addressing of luminaire and optional parameters through its built-in LCD control panel
- Remote DMX addressing of luminaire and optional parameters through a standard RDM DMX controller
- Information menu including hour counter, temperature, software version

## HARDWARE FEATURES

- Graphic LCD display for addressing and special functions settings, with flip function
- 6 menu buttons to set the functions
- Excess temperature protection
- Integrated wireless CRMX TiMo™ RDM receiver from LumenRadio™
- XLR 5 pin male and female connectors for DMX connection
- PowerCON TRUE1 male and female connectors for power connection

# 300W Wash luminaire

product line, is a constant efficiency regardless of the zoom aperture: NandoBeam-S3 delivers a 4,000 lumens output across its full beam range.

Its narrow angle gives a particularly effective and very powerful tight beam, while its wide angle works well for wash purposes, making NandoBeam-S3 the perfect lighting tool for a wide range of applications. NandoBeam-S3's arrangement of two rings of individually controlled LED emitters around a central LED renders it extremely versatile when operated in Expanded Full Colour mode. Effects capabilities can be coupled with Beam, Wash or Matrix applications to produce superb results whether performing in front of the audience or camera. NandoBeam-S3 is equipped with new generation three-phase stepper motors that allow the quick and precise movement essential for NandoBeam-S3's performance. These extremely compact new motors fit perfectly into the minimalist design of the luminaire.



## CONTROL

- DMX 512 protocol, through DMX cable or wireless system
- DMX-RDM compatible
- Stand-alone mode and Master/Slave modes
- Local control panel, with LCD display
- Choice of 3 DMX Modes (from 17 to 28 DMX channels)

## POWER SUPPLY

- Electronic supply with active PFC
- 100 to 240 Volts – 50/60Hz
- Power 400 Watt max

## COOLING SYSTEM

- Advanced cooling system based on Heatpipe technology
- Self adjusting variable speed fans for quiet operation (Auto mode)
- Selectable auto, stage & studio ventilation modes
- Safety protection against temperatures excesses

## HOUSING

- Moving-head skeleton made of aluminium and steel metal plates
- Heatsinks in aluminium
- Moulded covers in self-extinguishing fire retardant ABS PC (V0 class)
- Two sides handles for transportation
- Four heavy-duty feet for better stability
- IP20 protection rating
- Exterior finish: black (Carbon)

## INSTALLATION

- Fastening brackets system: one Omega ¼ turn brackets designed for use with standard clamps
- Mounting points: two ¼ turn locking fittings allowing installation of Omega brackets on luminaire
- Safety cable attachment point

## OPERATING PARAMETERS

- Operating positions: all (device on floor or fixed to a support)
- Maximum permitted ambient temperature (Ta max): 45°C (113°F)
- Minimum permitted ambient temperature (Ta min): -10°C (14°F)
- Minimum usage distance: 1.0 m (3.28 ft)

## COMPLIANCE

- EMC Directive 2014/30/EU
- LVD Directive 2014/35/EU

## SIZE

- Product: 288 x 380 x 220 mm (l x h x d)
- Flight-case Foam : 350 x 410 x 280 mm (l x h x d)

## WEIGHT

- Product: 9.1 KG

## PRODUCT CODES

- 013350 : NANDOBEAM S3 WASH LUMINAIRE

## LEGAL

- NANDOBEAM is AYRTON registered Trademark
- NANDOBEAM is a patented model

# NANDOBEAM-S6

NandoBeam™S6 is a very powerful and ultra-fast new generation moving-head fixture in a compact housing. Its advanced and highly efficient proprietary optical system coupled with powerful 15 Watt RGBW LED sources provide a narrow 8° beam as well as wide 40° coverage. NandoBeam-S6's thirty-seven 15 Watt LED are cooled by a heatpipe equipped with heat-transfer fluids and heat-exchange material. This advanced cooling technology gives an extended LED lifetime, quiet operation and maximum light source efficiency. A 6,000 lumens output at its 8° angle makes NandoBeam-S6 the perfect lighting tool for use as a beamlight moving-head. Its wide angle capabilities of up to 40° coupled with the same 6,000 lumens light output as its narrow beam angle gives great washlight potential. NandoBeam-S6



## OPTICS

- 2 elements 5:1 zoom high-resolution optic system
- Beam aperture: 8° to 40°
- Fast motorised linear zoom
- 210 mm front lenses cluster

## LIGHT SOURCE

- 37 x 500 lumens RGBW High-Power LED sources
- Total luminaire output: up to 6,000 lumens
- Rated life (L70): up to 40,000 hours
- Flicker free sources management, suitable for TV applications and all video recorded events

## MOVEMENT

- Extremely accurate positioning
- Moving-head operated via either 8- or 16-bit resolution
- High-resolution stepper motors operated via microprocessors ensure extreme accuracy and smooth movements.
- Pan and tilt with automatic repositioning
- Moving-head range : 540° (pan), 270° (tilt)

## COLOURS

- Sophisticated 4 colours RGBW mixed, reaching high Colour
- Rendering Index
- Uniform light beam with no colour shadows, and rich saturated and pastel colour-hues
- 4.29 billion colours (8 bit resolution)
- Virtual colour wheel, including most usuals white colour temperature presets
- Dynamic colour macro effect with variable speed

## EFFECTS

- Graphical effects capabilities
- Effects can be coupled with beam, wash or matrix applications
- Built-in pattern effects with speed and fade controls for scenic applications

## DIMMER / STROBE

- Electronic dimmer, allowing perfect light adjustment from 0 to 100% without colour variation
- White or colour strobe effect, with speed adjustment from 1 to 25 flashes per second

## SOFTWARE FEATURES

- Local DMX addressing of luminaire and optional parameters through its built-in LCD control panel
- Remote DMX addressing of luminaire and optional parameters through a standard RDM DMX controller
- Information menu including hour counter, temperature, software version

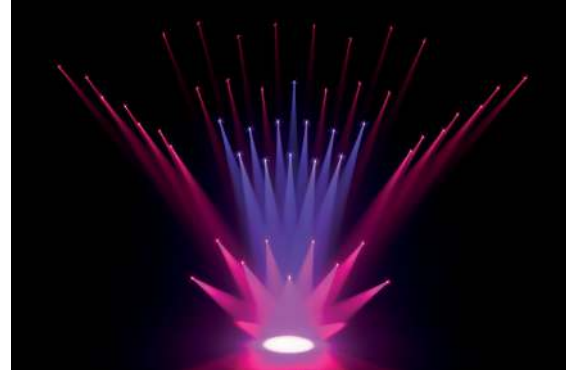
## HARDWARE FEATURES

- Graphic LCD display for addressing and special functions settings, with flip function
- 6 menu buttons to set the functions
- Excess temperature protection
- Integrated wireless CRMX TiMo™ RDM receiver from LumenRadio™
- XLR 5 pin male and female connectors for DMX connection
- Ethercon RJ45 IN / OUT connectors for ArtNet™ connection
- PowerCON TRUE1 male and female connectors for power connection

# 600W Wash luminaire

is equipped with new generation three phase stepper motors that allow quick and precise movement essential for this type of application. Very compact, these new motors fit perfectly into the minimalist design of the luminaire.

The high quality of its colour-mixing makes NandoBeam-S6 suitable for the most demanding environments. Ayrton's legendary consistency and quality of colour coupled with total control of its beam dispersion at any angle makes NandoBeam-S6 perfect for TV studios and stage, while low noise levels and accuracy of movement make it equally suited to events. NandoBeam-S6 is equally happy in front of an audience or a camera. Operated in Expanded Full Colour mode its 3 rings of LED emitters gathered around a central LED can be individually controlled or used with onboard effects to become a very versatile beamlight, washlight or matrix tool. NandoBeam-S6 is a versatile product that integrates a faster, new generation 32-bit circuit board and benefits from extensive connectivity and can be controlled by DMX-RDM, ArtNet™ or via LumenRadio™ DMX-RDM wireless connection.



## CONTROL

- DMX 512 protocol, through DMX cable or wireless system
- DMX-RDM compatible
- Stand-alone mode and Master/Slave modes
- ArtNet™ & sACN protocol through Ethernet cable
- Local control panel, with LCD display
- Choice of 3 DMX Modes (from 17 to 32 DMX channels)

## POWER SUPPLY

- Electronic supply with active PFC
- 100 to 240 Volts – 50/60Hz
- Power 650 Watt max

## COOLING SYSTEM

- Advanced cooling system based on Heatpipe technology
- Self adjusting variable speed fans for quiet operation (Auto mode)
- Selectable auto, stage & studio ventilation modes
- Safety protection against temperatures excesses

## HOUSING

- Moving-head skeleton made of aluminium and steel metal plates
- Heatsinks in aluminium and copper, satin finish
- Moulded covers in self-extinguishing fire retardant ABS PC (V0 class)
- Two sides handles for transportation
- Four heavy-duty feet for better stability
- IP20 protection rating
- Exterior finish: black (Carbon)

## INSTALLATION

- Fastening brackets system: two Omega ¼ turn brackets designed for use with standard clamps
- Mounting points: eight ¼ turn locking fittings allowing installation of Omega brackets on luminaire
- Safety cable attachment point

## OPERATING PARAMETERS

- Operating positions: all (device on floor or fixed to a support)
- Maximum permitted ambient temperature (Ta max): 45°C (113°F)
- Minimum permitted ambient temperature (Ta min): -10°C (14°F)
- Minimum usage distance: 1.5 m (4.92 ft)

## COMPLIANCE

- EMC Directive 2014/30/EU
- LVD Directive 2014/35/EU

## SIZE

- Product: 352 x 467 x 267 mm (l x h x d)
- Flight-case Foam : 410 x 500 x 330 mm (l x h x d)

## WEIGHT

- Product: 13.9 KG

## PRODUCT CODES

- 013450 : NANDOBEAM S6 WASH LUMINAIRE

## LEGAL

- NANDOBEAM is AYRTON registered Trademark
- NANDOBEAM is a patented model

# NANDOBEAM-S9

NandoBeam™S9 luminaire is the latest development and the most powerful fixture in the NandoBeam product line. Equipped with a new-generation power supply offering over 95% total output efficiency, this power feature enables the highly compact luminaire to use its LED sources continuously at full power without any loss of performance. NandoBeam-S9 is equipped with fifty-five high-performance Osram 15 Watt RGBW LED emitters arranged in rings around a central LED which is independently controllable to give a multitude of graphic effects possibilities.



## OPTICS

- 2 elements 5:1 zoom high-resolution optic system
- Beam aperture: 8° to 40°
- Fast motorised linear zoom
- 280 mm front lenses cluster

## LIGHT SOURCE

- 55 x 500 lumens RGBW High-Power LED sources
- Total luminaire output: up to 12,000 lumens
- Rated life (L70): up to 40,000 hours
- Flicker free sources management, suitable for TV applications and all video recorded events

## MOVEMENT

- Extremely accurate positioning
- Moving-head operated via either 8- or 16-bit resolution
- High-resolution stepper motors operated via microprocessors ensure extreme accuracy and smooth movements.
- Pan and tilt with automatic repositioning
- Moving-head range : 540° (pan), 270° (tilt)

## COLOURS

- Sophisticated 4 colours RGBW mixed, reaching high Colour
- Rendering Index
- Uniform light beam with no colour shadows, and rich saturated and pastel colour-hues
- 4.29 billion colours (8 bit resolution)
- Virtual colour wheel, including most usuals white colour temperature presets
- Dynamic colour macro effect with variable speed

## EFFECTS

- Graphical effects capabilities
- Effects can be coupled with beam, wash or matrix applications
- Built-in pattern effects with speed and fade controls for scenic applications

## DIMMER / STROBE

- Electronic dimmer, allowing perfect light adjustment from 0 to 100% without colour variation
- White or colour strobe effect, with speed adjustment from 1 to 25 flashes per second

## SOFTWARE FEATURES

- Local DMX addressing of luminaire and optional parameters through its built-in LCD control panel
- Remote DMX addressing of luminaire and optional parameters through a standard RDM DMX controller
- Information menu including hour counter, temperature, software version

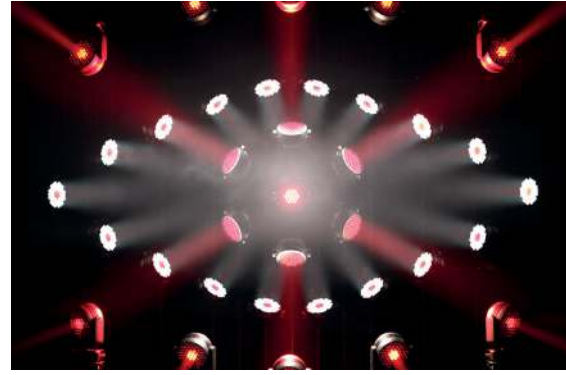
## HARDWARE FEATURES

- Graphic LCD display for addressing and special functions settings, with flip function
- 6 menu buttons to set the functions
- Excess temperature protection
- Integrated wireless CRMX TiMo™ RDM receiver from LumenRadio™
- XLR 5 pin male and female connectors for DMX connection
- Ethercon RJ45 IN / OUT connectors for ArtNet™ connection
- PowerCON TRUE1 male and female connectors for power connection



# 900W Wash Luminaire

Ayrton™ has put utmost care into the design and selection of materials when it developed its 5:1 optical zoom. Ayrton has equipped the luminaire with a solid cluster of 55 lenses to help reduce its diameter and optimize its design. A double honeycomb system has been introduced to enhance contrast and eliminate stray reflections. The wide 8° to 40° adjustable zoom-spread makes NandoBeam-S9 highly versatile. NandoBeam-S9 is fitted with an active cooling system that uses heat transfer fluid with phase change to enable heavy use under extreme conditions. A 975-Watt high-output LED power supply, an optical output of 280mm, and a high-performance cooling system have gone into the creation of a very powerful product that offers high-level performance in an ultra-compact design.



## CONTROL

- DMX 512 protocol, through DMX cable or wireless system
- DMX-RDM compatible
- Stand-alone mode and Master/Slave modes
- ArtNet™ & sACN protocol through Ethernet cable
- Local control panel, with LCD display
- Choice of 3 DMX Modes (from 17 to 36 DMX channels)

## POWER SUPPLY

- Electronic supply with active PFC
- 100 to 240 Volts – 50/60Hz
- Power 1,100 Watt max

## COOLING SYSTEM

- Advanced cooling system based on Heatpipe technology
- Self adjusting variable speed fans for quiet operation (Auto mode)
- Selectable auto, stage & studio ventilation modes
- Safety protection against temperatures excesses

## HOUSING

- Moving-head skeleton made of aluminium and steel metal plates
- Heatsinks in aluminium and copper, satin finish
- Moulded covers in self-extinguishing fire retardant ABS PC (V0 class)
- Two sides handles for transportation
- Four heavy-duty feet for better stability
- IP20 protection rating
- Exterior finish: black (Carbon)

## INSTALLATION

- Fastening brackets system: two Omega ¼ turn brackets designed for use with standard clamps
- Mounting points: four ¼ turn locking fittings allowing installation of Omega brackets on luminaire
- Safety cable attachment point

## OPERATING PARAMETERS

- Operating positions: all (device on floor or fixed to a support)
- Maximum permitted ambient temperature (Ta max): 45°C (113°F)
- Minimum permitted ambient temperature (Ta min): -10°C (14°F)
- Minimum usage distance: 2.0 m (6.56 ft)

## COMPLIANCE

- EMC Directive 2014/30/EU
- LVD Directive 2014/35/EU

## SIZE

- Product: 412 x 546 x 307 mm (l x h x d)
- Flight-case Foam : 510 x 590 x 370 mm (l x h x d)

## WEIGHT

- Product: 21.1 KG

## PRODUCT CODES

- 013550 : NANDOBEAM S9 WASH LUMINAIRE

## LEGAL

- NANDOBEAM is AYRTON registered Trademark
- NANDOBEAM is a patented model

# WILDSUN-K25 TC

The new WildSun™K25 TC (True Colour) is an evolution of the WildSun-K25, specially geared to shooting and broadcasting in high-definition. Producing extremely high-quality light without flickering, this luminaire achieves a colour temperature perfectly calibrated at 5700 K and a colour rendering index greater than 92. This is the only LED luminaire capable of measuring up to the classic Fresnel HMI 4,000 W and 6,000 W lights in terms of pure output. The new WildSun-K25 True Colour is particularly suitable for meeting the stringent lighting demands of sporting events, fashion shows, car shows or any prestigious



## OPTICS

- 5:1 zoom high-resolution optic system
- Beam aperture: 12° to 60°
- Fast motorised linear zoom
- 408 mm front lenses cluster

## LIGHT SOURCE

- 217 x 600 lumens 5700 K White LED sources
- Light output: up to 60,000 lumens
- Rated life (L70): up to 40,000 hours
- Flicker free sources management, suitable for TV applications and all video recorded events

## MOVEMENT

- Extremely accurate positioning
- Moving-head operated via either 8- or 16-bit resolution
- High-resolution stepper motors operated via microprocessors ensure extreme accuracy and smooth movements.
- Pan and tilt with automatic repositioning
- Moving-head range : 540° (pan), 270° (tilt)

## COLOURS

- Monochromatic daylight source perfectly calibrated at 5700 K
- Color rendering index greater than 92

## EFFECTS

- Graphical effects capabilities
- Eight LED concentric circles to adapt light output depending of use
- Effects can be coupled with beam, wash or matrix applications
- Built-in pattern effects with speed and fade controls for scenic applications

## DIMMER / STROBE

- Electronic dimmer, allowing perfect light adjustment from 0 to 100% without colour variation
- Strobe effect, with speed adjustment from 1 to 25 flashes per second

## SOFTWARE FEATURES

- Local DMX addressing of luminaire and optional parameters through its built-in LCD control panel
- Remote DMX addressing of luminaire and optional parameters through a standard RDM DMX controller
- Information menu including hour counter, temperature, software version

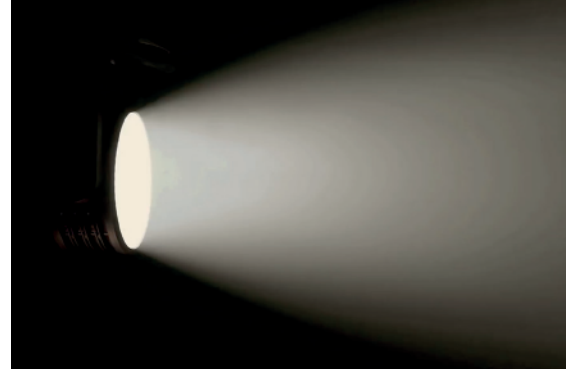
## HARDWARE FEATURES

- Graphic LCD display for addressing and special functions settings, with flip function
- 6 menu buttons to set the functions
- Excess temperature protection
- Integrated wireless CRMX TiMo™ RDM receiver from LumenRadio™
- XLR 5 pin male and female connectors for DMX connection
- Ethercon RJ45 IN / OUT connectors for ArtNet™ connection
- PowerCON TRUE1 male connector for power connection

# 1,300W Wash luminaire

events requiring high-quality light and perfectly rendered colour. Fitted with 217 LED emitters, the luminaire delivers more than 63,000 lumens of overall output with 40% less energy consumption.

WildSun-K25 TC is a powerhouse of technology and innovation. With the same basic specifications as the WildSun-K25, it is equipped with powerful tri-phase stepper motors that allow fast, accurate and silent positioning. Its optical zoom has a 5:1 ratio with a zoom range of 12° to 60°. Luminous intensity can be fine-tuned using the precision electronic dimmer, for even greater flexibility of use. The light fixture output is equipped with a protective holographic filter in polycarbonate and an honeycomb system to prevent glare. The user can control each concentric circle individually to adjust the luminaire's power accordingly or, for stage lighting, create dynamic effects.



## CONTROL

- DMX 512 protocol, through DMX cable or wireless system
- DMX-RDM compatible
- Stand-alone mode and Master/Slave modes
- ArtNet™ & sACN protocol through Ethernet cable
- Local control panel, with LCD display
- Choice of 3 DMX modes (from 11 to 22 DMX channels)

## POWER SUPPLY

- Electronic supply with active PFC
- 100 to 240 Volts – 50/60Hz
- Power 1,600 Watt max

## COOLING SYSTEM

- Advanced cooling system based on Heatpipe technology
- Self adjusting variable speed fans for quiet operation (Auto mode)
- Selectable auto, stage & studio ventilation modes
- Safety protection against temperatures excesses

## HOUSING

- Moving-head skeleton made of aluminium and steel metal plates
- Heatsinks in aluminium and copper, satin finish
- Moulded covers in self-extinguishing fire retardant ABS PC (V0 class)
- Two sides handles for transportation
- Four heavy-duty feet for better stability
- IP20 protection rating
- Exterior finish: black (Carbon)

## INSTALLATION

- Fastening brackets system: two Omega ¼ turn brackets designed for use with standard clamps
- Mounting points: eight ¼ turn locking fittings allowing installation of Omega brackets on luminaire
- Safety cable attachment point

## OPERATING PARAMETERS

- Operating positions: all (device on floor or fixed to a support)
- Maximum permitted ambient temperature (Ta max): 45°C (113°F)
- Minimum permitted ambient temperature (Ta min): -10°C (14°F)
- Minimum usage distance: 3.0 m (9.84 ft)

## COMPLIANCE

- EMC Directive 2014/30/EU
- LVD Directive 2014/35/EU

## SIZE

- Product: 547 x 702 x 348 mm (l x h x d)
- Flight-case Foam : 627 x 725 x 414 mm (l x h x d)

## WEIGHT

- Product: 36.5 KG

## PRODUCT CODES

- 013830: WILDSUN-K25 TC WASH LUMINAIRE

## LEGAL

- WILDSUN is AYRTON registered Trademark
- WILDSUN is a patented model

# WILDSUN-S25



WildSun™S25 is the full colour variation on the powerful WildSun-K25 luminaire. Equipped with 217 ultra-powerful RGBW mono-chip LED emitters, this technologically innovative marvel is the most powerful moving-head LED wash fixture on the market today. With overall light output of 60,000 lumens, it rivals the 2,500 and 4,000 Watt HMI luminaires fitted with colour filters, but with far greater flexibility of use and lower maintenance. Its four-colour mixing is based on an ingenious arrangement of emitters combined

## OPTICS

- 6:1 zoom high-resolution optic system
- Beam aperture: 10° to 60°
- Fast motorised linear zoom
- 408 mm front lenses cluster

## LIGHT SOURCE

- 217 x 600 lumens RGBW High-Power LED sources
- Light output: up to 60,000 lumens
- Rated life (L70): up to 40,000 hours
- Flicker free sources management, suitable for TV applications and all video recorded events

## MOVEMENT

- Extremely accurate positioning
- Moving-head operated via either 8- or 16-bit resolution
- High-resolution stepper motors operated via microprocessors ensure extreme accuracy and smooth movements.
- Pan and tilt with automatic repositioning
- Moving-head range : 540° (pan), 270° (tilt)

## COLOURS

- Sophisticated 4 colours RGBW mixed, reaching high Colour
- Rendering Index
- Uniform light beam with no colour shadows, and rich saturated and pastel colour-hues
- 4.29 billion colours (8 bit resolution)
- Virtual colour wheel, including most usuals white colour temperature presets
- Dynamic colour macro effect with variable speed

## EFFECTS

- Graphical effects capabilities
- Effects can be coupled with beam, wash or matrix applications
- Built-in pattern effects with speed and fade controls for scenic applications

## DIMMER / STROBE

- Electronic dimmer, allowing perfect light adjustment from 0 to 100% without colour variation
- White or colour strobe effect, with speed adjustment from 1 to 25 flashes per second

## SOFTWARE FEATURES

- Local DMX addressing of luminaire and optional parameters through its built-in LCD control panel
- Remote DMX addressing of luminaire and optional parameters through a standard RDM DMX controller
- Information menu including hour counter, temperature, software version

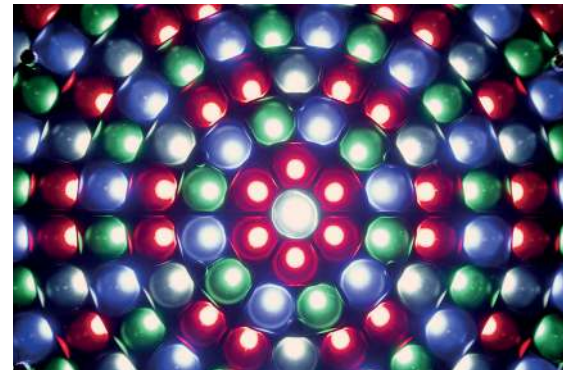
## HARDWARE FEATURES

- Graphic LCD display for addressing and special functions settings, with flip function
- 6 menu buttons to set the functions
- Excess temperature protection
- Integrated wireless CRMX TiMo™ RDM receiver from LumenRadio™
- XLR 5 pin male and female connectors for DMX connection
- Ethercon RJ45 IN / OUT connectors for ArtNet™ connection
- PowerCON 32A male connector for power connection

# 2,750W Wash luminaire

with a holographic filter, which creates an infinite palette of pastels and saturated colours. LED emitters are distributed over six 60° segments. Colours in each 36-diode segment can be controlled individually.

The proprietary, silicone-based, high-output 6:1 optical zoom ensures perfect colour stability over time, with a zoom range of 10° to 60°. The transmitting lens is equipped with an integrated honeycomb “egg crate” louver to prevent unwanted off-axis glare. Powerful tri-phase stepper motors drive the pan and tilt axes to allow fast, accurate and silent positioning. WildSun-S25 is equipped with serial connectivity and can be controlled using DMX-RDM, ArtNet™, sACN or wireless CRMX TiMo RDM from LumenRadio™.



## CONTROL

- DMX 512 protocol, through DMX cable or wireless system
- DMX-RDM compatible
- Stand-alone mode and Master/Slave modes
- ArtNet™ & sACN protocol through Ethernet cable
- Local control panel, with LCD display
- Choice of 3 DMX modes (from 14 to 38 DMX channels)

## POWER SUPPLY

- Electronic supply with active PFC
- 207 to 240 Volts – 50/60Hz
- Power 2,750 Watt max

## COOLING SYSTEM

- Advanced cooling system based on Heatpipe technology
- Self adjusting variable speed fans for quiet operation (Auto mode)
- Selectable auto, stage & studio ventilation modes
- Safety protection against temperatures excesses

## HOUSING

- Moving-head skeleton made of aluminium and steel metal plates
- Heatsinks in aluminium and copper, satin finish
- Moulded covers in self-extinguishing fire retardant ABS PC (V0 class)
- Two sides handles for transportation
- Four heavy-duty feet for better stability
- IP20 protection rating
- Exterior finish: black (Carbon)

## INSTALLATION

- Fastening brackets system: two Omega ¼ turn brackets designed for use with standard clamps
- Mounting points: eight ¼ turn locking fittings allowing installation of Omega brackets on luminaire
- Safety cable attachment point

## OPERATING PARAMETERS

- Operating positions: all (device on floor or fixed to a support)
- Maximum permitted ambient temperature (Ta max): 45°C (113°F)
- Minimum permitted ambient temperature (Ta min): -10°C (14°F)
- Minimum usage distance: 3.0 m (9.84 ft)

## COMPLIANCE

- EMC Directive 2014/30/EU
- LVD Directive 2014/35/EU

## SIZE

- Product: 547 x 702 x 348 mm (l x h x d)
- Flight-case Foam : 627 x 725 x 414 mm (l x h x d)

## WEIGHT

- Product: 38.0 KG

## PRODUCT CODES

- 013840 : WILDSUN S25 WASH LUMINAIRE

## LEGAL

- WILDSUN is AYRTON registered Trademark
- WILDSUN is a patented model

## SPOT LUMINAIRES

## PROFILE LUMINAIRES

Model	MISTRAL		DIABLO	
	"S" Version	"TC" Version	"S" Version	"TC" Version
<b>Optics</b>				
Optic Type	Motorized zoom system		Motorized zoom system	
Optic Size / Diameter	119 mm front lens		119 mm front lens	
Optic Efficiency	73%		73%	
Beam Aperture	6.7° to 53°		6.7° to 53°	
Zoom Elements / Range	13 Elements / 8:1		13 Elements / 8:1	
<b>Light Source</b>				
Architecture	White Light Engine		White Light Engine	
Light Engine Power	300 Watt		300 Watt	
Light Engine Output (lm)	26,000	20,000	26,000	20,000
Light Engine Colour Temperature (K)	8000	7000	8000	7000
Luminaire Output (lm)	19,000	14,000	19,000	14,000
Luminaire Colour Temperature (K)	6500	5700	6500	5700
Native Colour Rendering Index	>70	>90	>70	>90
Rated Life (L70)	L70 40,000 h		L70 40,000 h	
<b>Movement</b>				
Rotation Type / Range	Pan 540° - Tilt 270°		Pan 540° - Tilt 270°	
<b>Colours</b>				
Colour Mixing	CMY		CMY	
Colour Depth	16.7 million		16.7 million	
Colour Temperature Correction	Variable CTO		Variable CTO	
Fixed Colours (number/wheel)	7 colours / 1 Wheel		7 colours / 1 Wheel	
<b>Gobos/Effects</b>				
Fixed Gobos (number/wheel)	9 Gobos / 1 Wheel		9 Gobos / 1 Wheel	
Rotating Gobos (number/wheel)	7 Gobos / 1 Wheel		7 Gobos / 1 Wheel	
Gobo type / Size (mm) / Image (mm)	HD Glass / 25 / 20		HD Glass / 25 / 20	
4 blades Framing System	No		4 focal planes / Integral	
Graphic Animation Wheel (type)	Yes / Continuous		Yes / Continuous	
Rotating Effect	5-facet circular Prism		5-facet circular Prism	
Frost filter	Yes / Light Frost		Yes / Heavy Frost	
Iris Diaphragme	Yes		Yes	
<b>Software Features</b>				
Information Menu	Yes		Yes	
Software Upgrading Via DMX Signal	Yes		Yes	
<b>Hardware Features</b>				
Back-lit LCD Display Functions	Yes		Yes	
Menu Buttons For Setting Functions	Clicking Jog Wheel		Clicking Jog Wheel	
Integrated Wireless Receiver	LumenRadio CRMX TiMo		LumenRadio CRMX TiMo	
Input/Output Data Connector	XLR-5		XLR-5	
Input/Output Ethernet Connector	No		No	
Input/Output Power Connector	PowerCON TRUE1		PowerCON TRUE1	
<b>Control</b>				
Data Protocol	DMX 512 - RDM		DMX 512 - RDM	
Ethernet Protocol	No		No	
Channel Control	26 to 39		36 to 56	
<b>Electronic Power Supply</b>				
Range	100 to 240 Volts		100 to 240 Volts	
Frequency Range	50-60Hz		50-60Hz	
Power Consumption Maximum	450 W		550 W	
<b>Cooling System</b>				
Type	Forced ventilation		Forced ventilation	
System	Heatpipe technology		Heatpipe technology	
Temperature Protection	Yes		Yes	
<b>Housing</b>				
Body Material	Aluminium and Steel metal plates		Aluminium and Steel metal plates	
Cover Material	ABS PC (V0 class)		ABS PC (V0 class)	
Protection Rating	IP20		IP20	
Exterior Finish	Black		Black	
<b>Installation</b>				
Operating Positions	Any		Any	
Suspension System	2 Omega brackets		2 Omega brackets	
Safety Cable Attachment Point	Yes		Yes	
<b>Operating Parameters</b>				
Permitted Ambient Temperature	-10 to 45°C		-10 to 45°C	
Maximum Ambient Humidity	75% at 25°C		75% at 25°C	
<b>Dimensions &amp; Weight</b>				
Luminaire Dimensions (mm)	365 x 591 x 212		365 x 591 x 212	
Flight-case Foam Dimensions (mm)	450 x 620 x 280		430 x 660 x 280	
Weight (Kg)	18.9		21.8	
<b>Product Code</b>				
Standard Colour	011240	011250	011340	011350

		GHIBLI		KHAM SIN	
"S" Version		"TC" Version		"S" Version	"TC" Version
		Motorized zoom system		Motorized zoom system	
		137 mm front lens		158 mm front lens	
		66%		66%	
		7° to 56°		7° to 58°	
		13 Elements / 8:1		13 Elements / 8:1	
		White Light Engine		White Light Engine	
		600 Watt		750 Watt	
	35,000		26,000	60,000	48,000
	8000		7000	8000	7000
	23,000		17,000	40,000	32,000
	6500		5700	6500	5700
	>70		>90	>70	>90
		L70 40,000 h		L70 40,000 h	
		Pan 540° - Tilt 270°		Pan 540° - Tilt 270°	
		CMY		CMY	
		16.7 million		16.7 million	
		Variable CTO		Variable CTO	
		6 colours / 1 Wheel		7 colours / 1 Wheel	
		8 Gobos / 1 Wheel		No	
		7 Gobos / 1 Wheel		12 Gobos / 2 Wheels	
		HD Glass / 30 / 22		HD Glass / 34 / 24	
		4 focal planes / Integral		4 focal planes / Integral	
		Yes / Continuous		Yes / Continuous	
		5-facet circular Prism		1 circular & 1 linear Prism	
		Yes / Light Frost		1 light & 1 heavy Frost	
		Yes		Yes	
		Yes		Yes	
		Yes		Yes	
		Clicking Jog Wheel		Clicking Jog Wheel	
		LumenRadio CRMX TiMo		LumenRadio CRMX TiMo	
		XLR-5		XLR-5	
		etherCON CAT5		etherCON CAT5	
		PowerCON TRUE1		PowerCON TRUE1	
		DMX 512 - RDM		DMX 512 - RDM	
		ArtNet - sACN		ArtNet - sACN	
		34 to 58		39 to 63	
		100 to 240 Volts		100 to 240 Volts	
		50-60Hz		50-60Hz	
		800 W		1,150 W	
		Forced ventilation		Forced ventilation	
		Heatpipe technology		Heatpipe technology	
		Yes		Yes	
		Aluminium and Steel metal plates			
		ABS PC (V0 class)		ABS PC (V0 class)	
		IP20		IP20	
		Black		Black	
		Any		Any	
		2 Omega brackets		2 Omega brackets	
		Yes		Yes	
		-10 to 45°C		-10 to 45°C	
		75% at 25°C		75% at 25°C	
		494 X 729 X 281		494 x 778 x 280	
		655 x 590 x 555		655 x 590 x 555	
		35.6		39.8	
	011450	011460		011640	011650

# WASH LUMINAIRES

	MERAK "CS" Version	LEVANTE "S" Version	"TC" Version	BORA "S" Version	"TC" Version	NANDBEAM-S3 "CS" Version
<b>Optics</b>						
Optic Type	Motorized zoom system	Motorized zoom system		Motorized zoom system		Motorized zoom system
Optic Size / Diameter	168 mm front lens	138 mm front lens		178 mm front lens		170 mm lenses cluster
Optic Efficiency	60%	76%		70%		60%
Beam Aperture	7° to 70°	7.5° to 56°		8° to 64°		8° to 40°
Zoom Elements / Range	Fresnel lens / 10:1	13 Elements / 7.5:1		13 Elements / 8:1		2 Elements / 5:1
<b>Light Source</b>						
Architecture	RGBW LED Module	White Light Engine		White Light Engine		Multi-chip LED
Light Engine Power	250 Watt	300 Watt		750 Watt		15 Watt / 19
Light Engine Output (lm)	7,500 lm	26,000	20,000	60,000	48,000	6,700
Light Engine Colour Temperature (K)	-	8000	7000	8000	7000	-
Luminaire Output (lm)	4,500 lm	20,000	15,000	42,000	34,000	4,000
Luminaire Colour Temperature (K)	-	6500	5700	6500	5700	-
Native Colour Rendering Index	-	>70	>90	>70	>90	-
Rated Life (L70)	L70 40,000 h	L70 40,000 h		L70 40,000 h		L70 40,000 h
<b>Movement</b>						
Rotation Type / Range	Pan 540° - Tilt 270°	Pan 540° - Tilt 270°		Pan 540° - Tilt 270°		Pan 540° - Tilt 270°
<b>Colours</b>						
Colour Mixing	RGBW	CMY		CMY		RGBW
Colour Depth	4.29 billion	16.7 million		16.7 million		4.29 billion
Colour Temperature Correction	Yes / Virtual	Variable CTO		Variable CTO		Yes / Virtual
Fixed Colours (number/wheel)	Yes / Virtual	7 colours / 1 Wheel		12 colours / 2 Wheels		Yes / Virtual
<b>Gobos/Framing/Effects</b>						
Fixed Gobos (number/wheel)	No	No		No		No
Rotating Gobos (number/wheel)	No	7 Gobos / 1 Wheel		6 Gobos / 1 Wheel		No
Gobo type / Size (mm) / Image (mm)	-	Metal / 25 / 19		Metal / 34 / 25		-
4 blades Framing System	No	4 focal planes / Integral		4 focal planes / Integral		No
Graphic Animation Wheel (type)	No	No		No		No
Rotating Effect	Beam shaping Optic	No		No		No
Frost filter	No	Variable Linear Frost		Variable Linear Frost		No
Iris Diaphragme	No	Yes		Yes		No
<b>Software Features</b>						
Information Menu	Yes	Yes		Yes		Yes
Software Upgrading Via DMX Signal	Yes	Yes		Yes		Yes
<b>Hardware Features</b>						
Back-lit LCD Display Functions	Yes	Yes		Yes		Yes
Menu Buttons For Setting Functions	Clicking Jog Wheel	Clicking Jog Wheel		Clicking Jog Wheel		6 menu buttons
Integrated Wireless Receiver	LumenRadio CRMX TiMo	LumenRadio CRMX TiMo		LumenRadio CRMX TiMo		No
Input/Output Data Connector	XLR-5	XLR-5		XLR-5		XLR-5
Input/Output Ethernet Connector	No	No		etherCON CAT5		No
Input/Output Power Connector	PowerCON TRUE1	PowerCON TRUE1		PowerCON TRUE1		PowerCON TRUE1
<b>Control</b>						
Data Protocol	DMX 512 - RDM	DMX 512 - RDM		DMX 512 - RDM		DMX 512 - RDM
Ethernet Protocol	No	No		ArtNet - sACN		No
Channel Control	17 to 22	33 to 52		36 to 56		17 to 28
<b>Electronic Power Supply</b>						
Range	100 to 240 Volts	100 to 240 Volts		100 to 240 Volts		100 to 240 Volts
Frequency Range	50-60Hz	50-60Hz		50-60Hz		50-60Hz
Power Consumption Maximum	400 W	550 W		1,150 W		400 W
<b>Cooling System</b>						
Type	Forced ventilation	Forced ventilation		Forced ventilation		Forced ventilation
System	Vapor chamber technology	Heatpipe technology		Heatpipe technology		Extruded aluminium
Temperature Protection	Yes	Yes		Yes		Yes
<b>Housing</b>						
Body Material	Aluminium and Steel metal plates					
Cover Material	ABS PC (V0 class)	ABS PC (V0 class)		ABS PC (V0 class)		ABS PC (V0 class)
Protection Rating	IP20	IP20		IP20		IP20
Exterior Finish	Black	Black		Black		Black
<b>Installation</b>						
Operating Positions	Any	Any		Any		Any
Suspension System	2 Omega brackets	2 Omega brackets		2 Omega brackets		1 Omega brackets
Safety Cable Attachment Point	Yes	Yes		Yes		
<b>Operating Parameters</b>						
Permitted Ambient Temperature	-10 to 45°C	-10 to 45°C		-10 to 45°C		-10 to 45°C
Maximum Ambient Humidity	75% at 25°C	75% at 25°C		75% at 25°C		75% at 25°C
<b>Dimensions &amp; Weight</b>						
Luminaire Dimensions (mm)	365 x 533 x 212	365 x 591 x 212		494 x 737 x 280		288 x 380 x 220
Flight-case Foam Dimensions (mm)	450 x 585 x 280	450 x 620 x 280		655 x 590 x 555		350 x 410 x 280
Weight (Kg)	13.8	22.2		37.8		9.1
<b>Product Code</b>						
Standard Colour	013550	010240	010250	010640	010650	013350



<b>NANDOBEAM-S6</b> <b>"CS" Version</b>	<b>NANDOBEAM-S9</b> <b>"CS" Version</b>	<b>WILDSUN-K25 TC</b> <b>"TC" Version</b>	<b>WILDSUN-S25</b> <b>"CS" Version</b>
Motorized zoom system	Motorized zoom system	Motorized zoom system	Motorized zoom system
210 mm lenses cluster	178 mm lenses cluster	408 mm lenses cluster	408 mm lenses cluster
60%	60%	55%	55%
8° to 40°	8° to 40°	12° to 60°	10° to 60°
2 Elements / 5:1	2 Elements / 5:1	5:1	6:1
Multi-chip LED	Multi-chip LED	Mono-chip LED	Mono-chip LED
15 Watt / 37	15 Watt / 55	5 Watt / 217	5 Watt / 217
10,000	20,000	112,000	112,000
-	-	5700	5700
6,000	12,000	63,000	63,000
-	-	5700	5700
-	-	>92	-
L70 40,000 h	L70 40,000 h	L70 40,000 h	L70 40,000 h
Pan 540° - Tilt 270°	Pan 540° - Tilt 270°	Pan 540° - Tilt 270°	Pan 540° - Tilt 270°
RGBW	RGBW	No	RGBW
4.29 billion	4.29 billion	-	4.29 billion
Yes / Virtual	Yes / Virtual	No	Yes / Virtual
Yes / Virtual	Yes / Virtual	No	Yes / Virtual
No	No	No	No
No	No	No	No
-	-	-	-
No	No	No	No
No	No	No	No
No	No	Fixed Light Frost	Fixed Light Frost
No	No	No	No
Yes	Yes	Yes	Yes
Yes	Yes	Yes	Yes
Yes	Yes	Yes	Yes
6 menu buttons	6 menu buttons	6 menu buttons	6 menu buttons
LumenRadio CRMX	LumenRadio CRMX	LumenRadio CRMX	LumenRadio CRMX
XLR-5	XLR-5	XLR-5	XLR-5
etherCON CAT5	etherCON CAT5	etherCON CAT5	etherCON CAT5
PowerCON TRUE1	PowerCON TRUE1	PowerCON TRUE1	PowerCON 32A
DMX 512 - RDM	DMX 512 - RDM	DMX 512 - RDM	DMX 512 - RDM
ArtNet - sACN	ArtNet - sACN	ArtNet - sACN	ArtNet - sACN
17 to 32	17 to 36	11 to 28	14 to 38
100 to 240 Volts	100 to 240 Volts	100 to 240 Volts	207 to 240 Volts
50-60Hz	50-60Hz	50-60Hz	50-60Hz
650 W	1,100 W	1,600 W	2,750 W
Forced ventilation	Forced ventilation	Forced ventilation	Forced ventilation
Heatpipe technology	Heatpipe technology	Heatpipe technology	Heatpipe technology
Yes	Yes	Yes	Yes
Aluminium and Steel metal plates			
ABS PC (V0 class)	ABS PC (V0 class)	ABS PC (V0 class)	ABS PC (V0 class)
IP20	IP20	IP20	IP20
Black	Black	Black	Black
Any	Any	Any	Any
2 Omega brackets	2 Omega brackets	2 Omega brackets	2 Omega brackets
-10 to 45°C	-10 to 45°C	-10 to 45°C	-10 to 45°C
75% at 25°C	75% at 25°C	75% at 25°C	75% at 25°C
352 x 467 x 267	412 x 546 x 307	547 x 702 x 348	547 x 702 x 348
410 x 500 x 330	510 x 590 x 370	627 x 725 x 414	627 x 725 x 414
14.9	21.1	36.5	38.0
013450	013550	013830	013840

## WARRANTY

The Manufacturer warrants the Products manufactured and sold by the Manufacturer against defects in material and workmanship, during a period of 24 months starting from the date of purchase of the Product, which shall be deemed to be the date of the invoice issued by the Manufacturer.

This warranty shall in any event be subject to the following conditions:

- The Customer shall have ensured that the Products have been stored, fitted and used in accordance with any specifications, user instructions, maintenance manuals etc. provided by the Manufacturer.
- The Customer shall not have changed, removed or obscured any serial or identification numbers, labels, lettering or other markings which are on the Products at the time of delivery thereof.
- The warranty does not extend to any damage caused by any type of operation or use outside that for which the Products are reasonably intended.

The Manufacturer assumes no warranty for normal wear and tear, material provided by the Customer, processing of the Products made by the Customer, damage due to negligence, accident, improper storage, installation or operation or due to inadequate maintenance or use, or damage resulting from any modification or repair not approved beforehand by the Manufacturer in writing. The Manufacturer will not be liable where any non-authorized software or non-authorized spare or replacement parts are used. Any costs incurred by the Manufacturer for examining and removing such defects will be borne by the Customer upon demand. The Customer will always be responsible alone for the completeness and correctness of any information provided by it.

The Manufacturer's warranty provided herein is made only to the benefit of the Customer. The warranty may be asserted by the Customer only and not by any third party or other user of the Products..

The Manufacturer's written permission must be obtained before returning any Product, whereupon the Manufacturer will furnish shipping instructions. Any Product returned without the permission will be held at the Customer's risk and is liable to non-acceptance.

If any Product covered by this warranty is returned by the Customer within the applicable warranty period set above and upon examination by the Manufacturer, the latter determines to its satisfaction that such Product was defective in material or workmanship at the time of delivery to the Customer. The Manufacturer will, at its option, repair or replace the Product or the defective part thereof, or reimburse the Customer for the purchase price.

For purposes of clarity, «repair or replace the Product or the defective part thereof» does not include any reinstallation costs or expenses. If the Manufacturer chooses to replace the Product and is not able to do so because it has been discontinued or is not available, the Manufacturer may replace it with a comparable product.

The Customer shall convey with each Product distributed to end users the MANUFACTURER'S LIMITED WARRANTY set in these Terms and Conditions of Sale and included by the Manufacturer with such Product. If the Manufacturer determines that the appropriate remedy for a defective product is refund of the Customer's purchase price, the Customer shall refund to the end user (or arrange for the refund to the end user of) the full purchase price paid by the end user for such defective Product.

## CREDITS

Brochure design and creation under the authority of Yvan Péard (AYRTON)  
Artistic Direction: Jean Nguyen (AYRTON)  
Products and Brands specifications: Yvan Péard (AYRTON)  
Technical specifications: Cyril Union (AYRTON)  
Creation & realisation: Jean Nguyen (AYRTON)  
Translation/Adaptation: Jeff Styler (AXESSIO)  
Printing: Grafik Plus - Rosny-sous-bois  
Products illustration: Lance Liu, Jean Nguyen (AYRTON), MARC & BRANDON  
Photos applications: Lance Liu, Jean Nguyen (AYRTON)

## LEGAL

AYRTON, DIABLO, GIBLI, KHAMSIN, MISTRAL, MERAK, LEVANTE, BORA, NANDOBEAM & WILDSUN are AYRTON registered Trademarks. All rights reserved.  
DIABLO, GIBLI, KHAMSIN, MISTRAL, MERAK, LEVANTE, BORA, NANDOBEAM & WILDSUN are patented models. AYRTON products may be subject to modification even without notice. Pictures featuring in this catalog are non contractual. The publisher declines any responsibility for any eventual missing or incorrect information given.

© AYRTON 2019 - All reproduction forbidden except with express written approval.

All specifications and photos contained in this brochure are for information purposes only and AYRTON™ reserves the right to change product specifications at any time without notice or incurring obligation. For full specification details and information on standard and optional equipment, please consult your authorised dealer.

# PROFILE LUMINAIRE SERIES

THE WIND OF PERFORMANCE



## DIABLO

19,000 LUMENS - 300W



## GHIBLI

23,000 LUMENS - 600W



## KHAMSIN

40,000 LUMENS - 750W

FULL FIELD FRAMING - UNIFORM FLAT BEAM  
8:1 ZOOM - NATIVE HIGH CRI (TC VERSION)  
SLEEK INDUSTRIAL DESIGN - HIGHLY COMPACT FORMAT





**AYRTON**

Digital Lighting

[www.ayrton.eu](http://www.ayrton.eu)

01.2019