

TECHNICAL NOTE

Date: Feb 2019

Ref: TN433

Raised by: RW

Distributed to : As Required



Soundtracs - Digico(UK) Ltd. Unit 10 Silverglade Business Park, Chessington, Surrey, KT9 2QL England
Tel: +44 1372 845600 Fax: +44 1372 845656 email: support@digiconsoles.com

Upgrading SD8 to V1069 Stealth Core 2

These instructions will guide you through updating your SD8 Console from V987 to the latest release. If you are upgrading from a version earlier than V443, please contact DiGiCo Support before attempting this upgrade. You can update directly from V443+ to V1069.

V1069 replaces V987 as the latest release.

SD8 V1069 is only compatible with External Waves MultiRack.

Waves MultiRack will no longer run on your console. If you are running Waves MultiRack on your console, please visit <http://www.waves.com/downloads/digico> for more information.

If you are upgrading from a version of software earlier than V821, SD8 Stealth Core 2 software is a Chargeable Upgrade.

Your console will start for 10 times without an activation code after which one must be entered.

To purchase an activation code (password), please go to <http://www.digico.biz/docs/about/stealth-core2.shtml>

If you are upgrading from V821 and have already activated Core 2, this activation will remain in place

This upgrade will involve updating all or some of the following: Console Software and Worksurfaces.

Please note that in the unlikely event that any of the serial devices fail to update correctly, you may be required to reprogram them using an ICD2 programmer. Please consult your local DiGiCo distributor for more information.

Allow yourself plenty of time to perform these upgrades.

The following table lists the versions and codes you will end up with after performing this update

| Description | Version 987 | Version 1069 |
|-----------------------------|-------------|--------------|
| Software | 9.1.987 | 10.2.1069 |
| Worksurfaces | 45 | 118 |
| Local I/O | 55 | 55 |
| Engine : HOST | 06/09/2013 | 06/09/2013 |
| Engine : FPGA | 06/11/2012 | 06/11/2012 |
| Engine : Effects | 18/04/2012 | 18/04/2012 |
| SD-Rack: Rack8b.bin | 21/09/2016 | 21/09/2016 |
| SD-Rack : Rack8b.bit | 05/07/2012 | 05/07/2012 |
| D-Rack : Drack8b.bin | 10/12/2014 | 10/12/2014 |
| D-Rack : Drack8b.bit | 13/03/2014 | 13/03/2014 |
| D2-Rack: D2rack.bin | 03/11/2017 | 03/11/2017 |
| D2-Rack:D2rack.bit | 01/04/2014 | 01/04/2014 |
| DiGiRack/MADIRack: Rack.bin | 28/09/15 | 28/09/15 |
| DiGiRack/MADIRack: Rack.bit | 10/03/06 | 10/03/06 |
| Optocore V221 Firmware | V5R3 | V5R3 |

**Disconnect All Optocore, MADi, Local I/O Audio and
Headphone Connections before proceeding with this upgrade.
Quit to Windows (system > quit to windows)**

1. Copy the Software Updater **SD8_V1069z_Updater.exe** onto a suitable USB Key and insert into a free USB Socket on the SD8.

2. Right-Click on the **Start Menu**, and choose **Explore**.

Navigate to your USB Key, and run **SD8_V1069z_Updater.exe** from your USB Key. This updater will install the required updates, application software, and backup your current SD8 application folder.

3. The **UpdateHardware** application will now automatically run.

For each device, you will see the current running version in the “running” column, with the new version in the “available” column. The available version is based on the corresponding file in D:\SD8 directory.

Please Update the following Firmware:-

Worksurfaces

If you are updating from a version previous to V929, there may be additional Console firmware updates to perform.

Once complete, close the **UpdateHardware** Program and remove your USB Key from the Console.

4. From the Start Menu, shut down the console and power off.

5. Power the console on. The console will launch straight into the SD8 application.

You should check that all the components have updated correctly in the Diagnostics Panel.

Open this from the System Menu / Diagnostics.

The First Tab (Console) will show the version for the Serial you have updated.

The right-hand section of this window lists the Serial devices, and in the code column, you can see the version running. These should match the new release versions listed at the start of this document. If they do not, it is likely that the upgrades have failed, and you should repeat the upgrade process (from Point 3) using **D:\SD8\UpdateHardware.exe**.

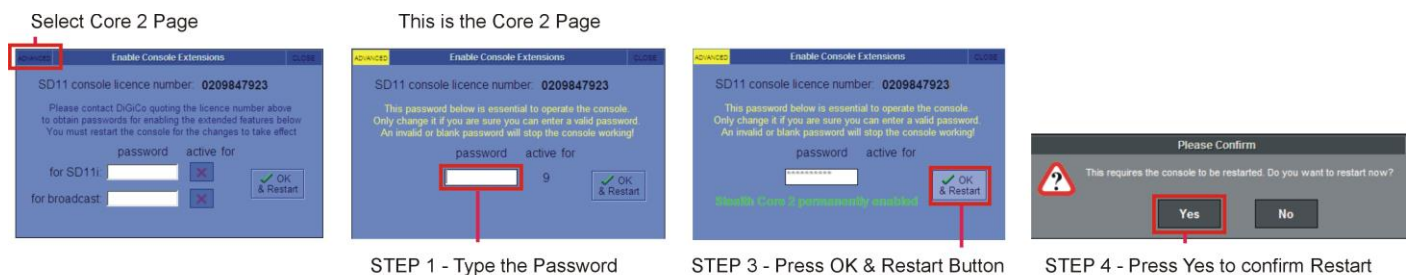
The second Tab (Engine) will show the Engine Codes you have updated. Confirm that the Host, Effects & FPGA Code Downloaded Dates match the date listed on the first page of this document.

6. If you are upgrading from V760 or previous (not required if upgrading from V821) - Go to *System>Enable Extensions* and touch in the top left corner on **Core 2 to obtain your security code so you can purchase and activate your Stealth Core 2 Licence.**

Stealth Core 2 Upgrade – IMPORTANT NOTES about activating your Core 2 upgrade

If you are upgrading from V821 and have already activated Core 2, these steps are not necessary as the Core 2 activation will already be in place and will remain so.

If you are upgrading from V760 or earlier, when you have the generated the password, go to the console Master Screen > System > Enable Extensions and do the following:



OR

If 10 free tries have already expired you will see this panel on application start



In this case - **Type the Password** and press the on screen **OK** button and the application will load as Core 2
To exit the application without entering a password press the keyboard **ESC** key

If, after following all the instructions, you cannot upgrade your SD8, please contact DiGiCo Technical Support.