

TECHNICAL NOTE

Date: May 2017

Ref: TN386

Raised by: DB/RW

Distributed to : As Required



Digico(UK) Ltd. Unit 10 Silverglade Business Park Chessington Surrey KT9 2QL England
Tel: +44 1372 845600 Fax: +44 1372 845656 email: support@digiconsoles.com

Upgrading SD7 to V929 Stealth Core 2

These instructions will guide you through updating your SD7 Console from V821 to the latest release. If you are upgrading from a version earlier than V443, please contact DiGiCo Support before attempting this upgrade. You can update directly from V443+ to V929.

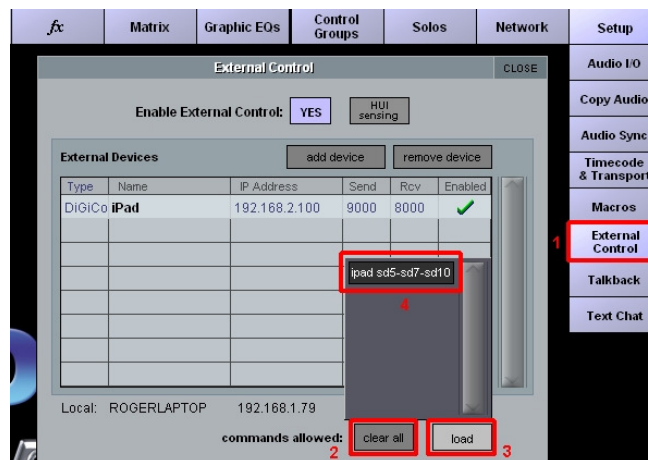
V929 replaces V821/V925 as the latest release.

SD7 V929 is Compatible with Waves 9.8 or above only. If you are running Waves MultiRack on your console, please visit <http://www.waves.com/downloads/digico> to download the latest version. Waves 9.7 or earlier is not compatible with SD Series Stealth Core 2 Software.

This upgrade will involve updating all or some of the following: Console Software, Local IO and Switcher.

SD7 V929 includes a Firmware update for SD, D, D2, DiGiRacks and MADIRacks.

Before using the DiGiCo SD or DiGiCo SD SC2 iPad Apps with V929 you should first open the Setup>External Control Panel, "Clear All" existing commands and then "Load Commands" for the relevant console. See image below:



Please note that in the unlikely event that any of the serial devices fail to update correctly, you may be required to reprogram them using an ICD2 programmer. Please consult your local DiGiCo distributor for more information.

Allow yourself plenty of time to perform these upgrades.

The following table lists the versions and codes you will end up with after performing this update

Description	Version 821	Version 929
Software	8.0.821	9.0.929
Worksurfaces	58	58
Local I/O	111	114
Timecode	48	48
Switcher	36	41
Engine : HOST	06/09/2013	06/09/2013
Engine : FPGA	06/11/2012	06/11/2012
Engine : Effects	18/04/2012	18/04/2012
SD-Rack: Rack8b.bin	20/05/2013	21/09/2016
SD-Rack : Rack8b.bit	05/07/2012	05/07/2012
D-Rack : Drack8b.bin	31/03/2014	10/12/2014
D-Rack : Drack.bit	13/03/2014	13/03/2014
D2-Rack: D2rack.bin	28/05/2014	10/12/2014
D2-Rack:D2rack.bit	01/04/2014	01/04/2014
DiGiRack/MADIRack: Rack.bin	12/12/08	28/09/15
DiGiRack/MADIRack: Rack.bit	10/03/06	10/03/06
Optocore V221 Firmware	V5R3	V5R3

**Disconnect All Optocore, MADi, Local I/O Audio and
Headphone Connections before proceeding with this upgrade.
Quit Both Engines to Windows**

ON ENGINE A ...

1. Copy the Software Updater **SD7_V929z_Updater.exe** onto a suitable USB Key and insert into a free USB Socket on the SD7.

2. Right-Click on the **Start Menu**, and choose **Explore**.

Navigate to your USB Key, and run **SD7_V929z_Updater.exe** from your USB Key. This updater will install the required updates, application software, and backup your current SD7 application folder.

3. The **UpdateHardware** application will now automatically run.

For each device, you will see the current running version in the “running” column, with the new version in the “available” column. The available version is based on the corresponding file in D:\SD7 directory.

Now proceed with the console firmware updates in the following order:-

**Local IO
Switcher**

If you are updating from a version previous to V821, there may be Console firmware updates to perform.

If you have SD series or other Racks as part of your SD7 System, there is an update available. If not already connected, **please now connect your racks to the SD7**. If you are upgrading via a MADi connection, please connected your Rack to the Console MADi ports.

If you are upgrading via Optocore, please refer to TN278.

Once complete, close the **UpdateHardware** Program and remove your USB Key from the Console.

4. From the Start Menu, shut down Engine A. Do not power the console off.

Switch to the B Engine and perform the same procedure from Point (1) to upgrade Engine B.

Note: No Surface or Rack codes need updating on Engine B. The Serial Devices are shared devices, and should only be updated from Engine A. Rack Codes should only be update from the A Engine.

5. Once Engine B has been updated, shut down Engine B and turn the console power off

6. Power the console on. Both engines will launch straight into the SD7 application.

You should check that all the components have updated correctly in the Diagnostics Panel.

Open this from the System Menu / Diagnostics.

The First Tab (Console) will show the version for any serial devices you have updated.

The right hand section of this window lists the Serial devices, and in the code column, you can see the version running. These should match the new release versions listed at the start of this document. If they do not, it is likely that the upgrades have failed, and you should repeat the upgrade process (from Point 3) using

D:\SD7\UpdateHardware.exe.

The second Tab (Engine) will show the Engine Codes you have updated. Confirm that the Host, Effects & FPGA Code Downloaded Dates match the date listed on the first page of this document.

**If, after following all the instructions, you cannot upgrade your SD7, please contact
DiGiCo Technical Support.**
