

# TECHNICAL NOTE

Date: April 2018

Ref: TN409

Raised by: RW

Distributed to : As Required



Soundtracs - Digico(UK) Ltd. Unit 10 Silverglade Business Park Chessington Surrey KT9 2QL England  
Tel: +44 1372 845600 Fax: +44 1372 845656 email: [support@digiconsoles.com](mailto:support@digiconsoles.com)

## Upgrading SD10 to V987 Stealth Core 2

These instructions will guide you through updating your SD10 Console from V929 to the latest release. If you are upgrading from a version earlier than V443, please contact DiGiCo Support before attempting this upgrade. You can update directly from V443+ to V987.

V987 replaces V929 as the latest release.

**SD10 V987 is only compatible with External Waves MultiRack.**

**Waves MultiRack will no longer run on your console. If you are running Waves MultiRack on your console, please visit <http://www.waves.com/downloads/digico> for more information.**

**We strongly advise Waves users to read the MultiRack for DiGiCo SD Consoles user guide.pdf explaining the requirements to use Waves MultiRack on an external PC and ensuring that all of the necessary equipment and licences are in place to do this before upgrading their console software.**

**If you are upgrading from a version of software earlier than V822, SD Stealth Core 2 software is a Chargeable Upgrade.**

**Your console will start for 10 times without an activation code after which one must be entered.**

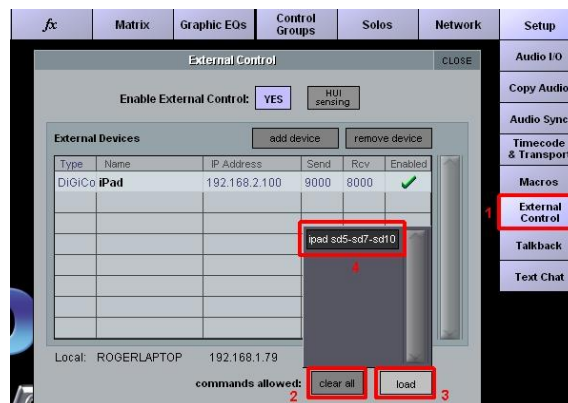
**To purchase an activation code (password), please go to <http://www.digico.biz/docs/about/stealth-core2.shtml>**

**If you are upgrading from V822 and have already activated Core 2, this activation will remain in place.**

**This upgrade will involve updating all or some of the following: Console Software and Local IO.**

**SD10 V987 includes a Firmware update for D2 Racks.**

**Before using the DiGiCo SD or DiGiCo SD SC2 iPad Apps with V987 you should first open the Setup>External Control Panel, "Clear All" existing commands and then "Load Commands" for the relevant console. See image below:**



**Please note that in the unlikely event that any of the serial devices fail to update correctly, you may be required to reprogram them using an ICD2 programmer. Please consult your local DiGiCo distributor for more information.**

**Allow yourself plenty of time to perform these upgrades.**

The following table lists the versions and codes you will end up with after performing this update

Description	Version 929	Version 987
Software	9.0.929	9.1.987
Worksurfaces	115	115
Local I/O	54	55
GPIO macro	9	9
Engine : HOST	06/09/2013	06/09/2013
Engine : FPGA	06/11/2012	06/11/2012
Engine : Effects	18/04/2012	18/04/2012
SD-Rack: Rack8b.bin	21/09/2016	21/09/2016
SD-Rack : Rack8b.bit	05/07/2012	05/07/2012
D-Rack : DRack8b.bin	10/12/2014	10/12/2014
D-Rack : DRack.bit	13/03/2014	13/03/2014
D2-Rack: D2rack.bin	10/12/2014	03/11/2017
D2-Rack:D2rack.bit	01/04/2014	01/04/2014
DiGiRack/MADIRack: Rack.bin	25/09/15	28/09/15
DiGiRack/MADIRack: Rack.bit	10/03/06	10/03/06
Optocore V221 Firmware	V5R3	V5R3

**Disconnect All Optocore, MADi, Local I/O Audio and Headphone Connections before proceeding with this upgrade.  
Quit to Windows (system > quit to windows)**

**1.** Copy the Software Updater **SD10\_V987z\_Updater.exe** onto a suitable USB Key and insert into a free USB Socket on the SD10.

**2.** Right-Click on the **Start Menu**, and choose **Explore**.

Navigate to your USB Key, and run **SD10\_V987z\_Updater.exe** from your USB Key. This updater will install the required updates, application software, and backup your current SD10 application folder.

**3.** The **UpdateHardware** application will now automatically run.

For each device, you will see the current running version in the “running” column, with the new version in the “available” column. The available version is based on the corresponding file in D:\SD10 directory.

Perform each required update and wait for the green tick to disappear indicating that each update has finished before continuing with the next one:

Now proceed with the console firmware updates in the following order:-

**Local IO**

**If you are updating from a version previous to V929, there may be additional Console firmware updates to perform.**

If you have D2 Racks as part of your SD10 System, there is an update available. If not already connected, **please now connect your racks to the SD10.**

Once complete, close the **UpdateHardware** Program and remove your USB Key from the Console.

4. From the Start Menu, shut down the console and power off.
5. Power the console on. The console will launch straight into the SD10 application.

You should check that all the components have updated correctly in the Diagnostics Panel.

Open this from the System Menu / Diagnostics.

The First Tab (Console) will show the version for the serial you have updated.

The right hand section of this window lists the Serial devices, and in the code column, you can see the version running. These should match the new release versions listed at the start of this document. If they do not, it is likely that the upgrades have failed, and you should repeat the upgrade process (from Point 3) using

**D:\SD10\UpdateHardware.exe.**

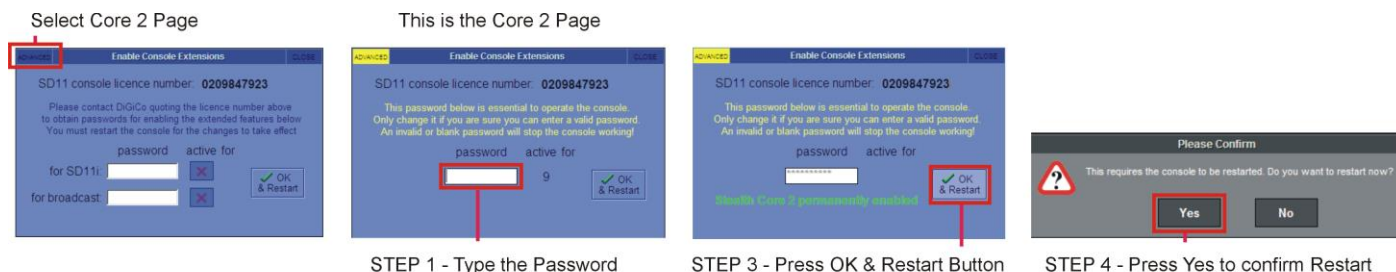
The second Tab (Engine) will show the Engine Codes you have updated. Confirm that the Host, Effects & FPGA Code Downloaded Dates match the date listed on the first page of this document.

**6. If you are upgrading from V760 or previous (not required if upgrading from V822) - Go to *System>Enable Extensions* and touch in the top left corner on **Core 2** to obtain your security code so you can purchase and activate your Stealth Core 2 Licence.**

### **Stealth Core 2 Upgrade – IMPORTANT NOTES about activating your Core 2 upgrade**

**If you are upgrading from V822 and have already activated Core 2, these steps are not necessary as the Core 2 activation will already be in place and will remain so.**

**If you are upgrading from V760 or earlier, when you have the generated the password, go to the console Master Screen > System > Enable Extensions and do the following:**



STEP 1 - Type the Password

STEP 3 - Press OK & Restart Button

STEP 4 - Press Yes to confirm Restart

**OR**

If 10 free tries have already expired you will see this panel on application start



In this case - **Type the Password** and press the on screen **OK** button and the application will load as Core 2  
To exit the application without entering a password press the keyboard **ESC** key

**If, after following all the instructions, you cannot upgrade your SD10, please contact DiGiCo Technical Support.**