

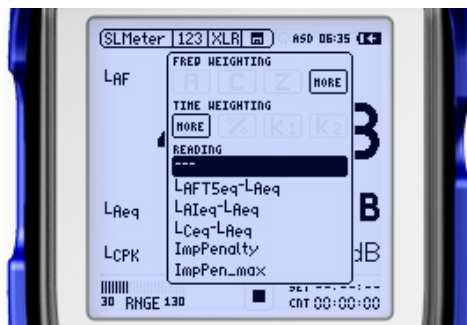
The XL2 Sound & Vibration Analyzer offers the following measurement functions by default:

- **Sound Level Meter**
  - SPL actual, Leq, Lmin, Lmax, Lpeak
  - Frequency weighting A, C, Z
  - Time weighting: Fast, Slow
  - Recording of compressed wav-files and voice notes
  - 1/3 and 1/1 Octave band analysis
- **Reverberation Time RT60**
  - octave bands results from 63 Hz - 8 kHz
- **Polarity**
- **Delay Time**
- **Audio Analyzer**
- **Oscilloscope**



The following options are available for the XL2 Sound & Vibration Analyzer:

## Extended Acoustic Pack



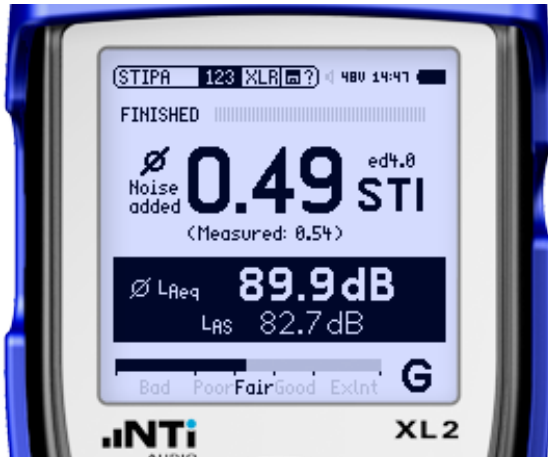
- **SLMeter/RTA function**
  - Recording of linear wav-files (24 bit, 48 kHz)
  - Percentiles for wideband and spectrum with flexible setting from 0.1% to 99.9%
  - Sound Exposure Level LAE
  - 100 ms logging
  - Spectrum logging of Lmin and Lmax
  - Event-triggered audio and data recording
  - Time weighting: Impulse (LxI, Lxleq with x=A, C, Z)
  - True peak level in 1/1 and 1/3 octave resolution
  - Clock-Impulse Maximum Level (TaktMax) and values as specified in DIN 45645-1
  - Impulsiveness detection in accordance with BS4142:2014 and NordTest ACOU 112
- **FFT function**
  - High-resolution Zoom-FFT with selectable frequency ranges and resolution up to 0.4 Hz in the range of 5 Hz to 20 kHz
- **RT60 function**
  - Reverberation time in one-third-octave resolution

## Spectral Limits Option



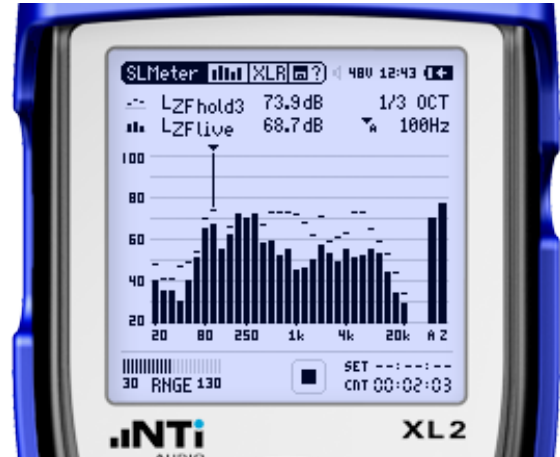
- **FFT and 1/12 octave function**
  - Comparing measurement results against captures with relative or absolute curve display
  - Comprehensive tolerance handling with tolerance masks based on captures for passed/failed measurements
- **1/12 octave function**
  - High-resolution spectral analyzer 1/12 Oct + Tol
  - Selectable 1/1, 1/3, 1/6 and 1/12 octave resolution
  - Frequency band listening at rear speaker and headphone
  - Sound Mode: 11.5 Hz to 21.8 kHz
  - Vibration mode: 0.73 Hz to 1.36 kHz
- **FFT function**
  - High-resolution Zoom FFT with selectable frequency ranges and resolution up to 0.4 Hz in the range from
  - Sound mode: 5 Hz to 20 kHz
  - Vibration mode: 1 Hz to 20 kHz
- **SLMeter/RTA function**
  - True peak level in 1/1 and 1/3 octave resolution
- **Noise Curves**
  - accordance to ANSI S12.2-2019, -1995 and ISO 1996

## Speech Intelligibility STIPA Option



- For Public Announcement and Evacuation Systems
- Measurement in accordance with the standards IEC 60268-16, DIN VDE 0833-4, VDE 0828-1, DIN EN 50849, AS 1670.4, ISO 7240-1, CEN/TS 54-32
- Ambient noise correction and automated averaging for repeated measurements

## Type Approval Option



- Upgrades the instrument to the XL2-TA, the sound level meter for certified measurements
- Class 1 in accordance with the standards IEC 61672:2014, IEC 61260:2014, ANSI S1.4:2014 and ANSI S1.11:2014 and DIN 45657

## Cinema Meter Option



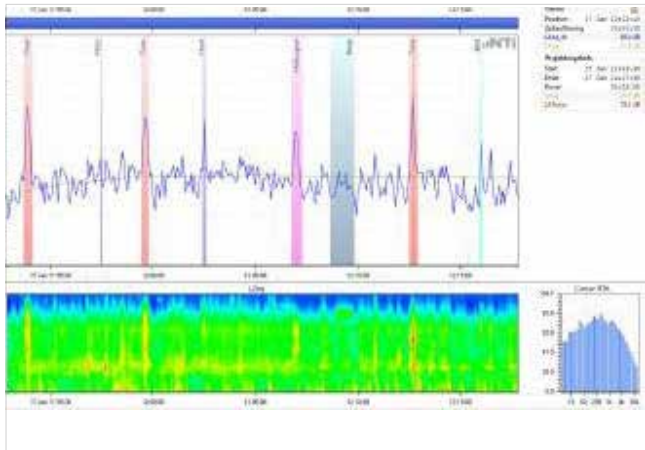
- Calibration and repetitive verification in accordance with the SMPTE ST 202:2010 and SMPTE RP 200:2012 standards
- Includes the "Spectral Limits" Option

## Vibration Option



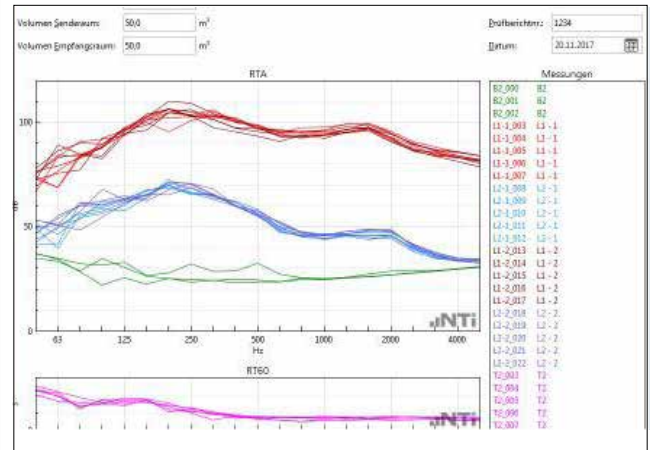
- Extends the XL2 to a Vibration Meter with acceleration, velocity and displacement
- Frequency range: 0.8 Hz - 2.5 kHz
- FFT analysis in selectable ranges from 1 Hz to 1.69 kHz

## Data Explorer Option



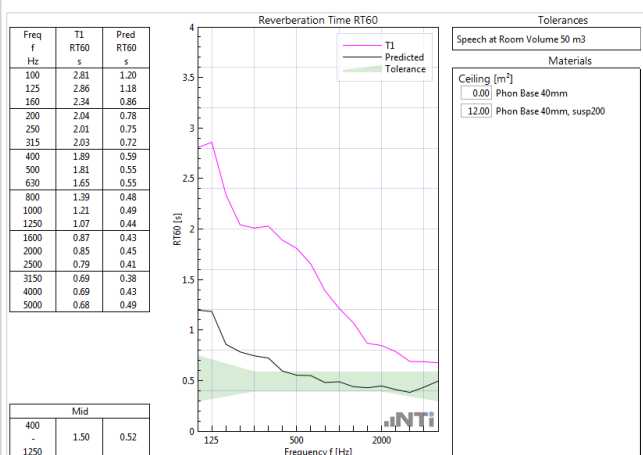
- Data Visualization
- Audio playback synchronized to graph
- Calculates sum of frequency bands
- Customized Reporting

## Sound Insulation Reporter Option



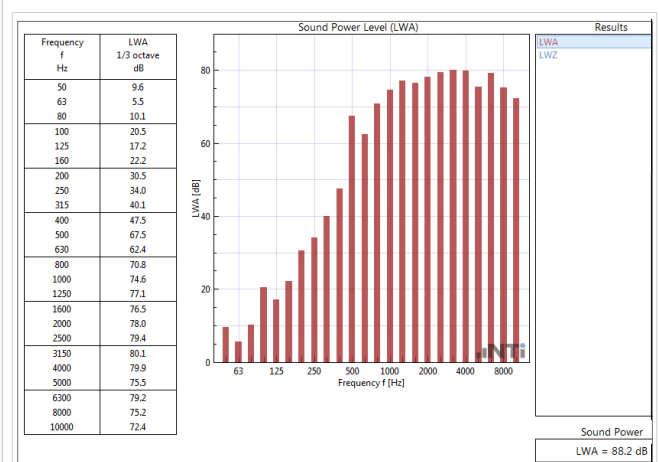
- Airborne, Impact & Facade Sound Insulation
- Standards ISO 16283, ISO 140, ISO 717, ISO 10140, DIN 4109, Document E, NEN 5077, ASTM E336, E413, E1007, E989, E966, E1332, GB/T 19889, SIA 181
- Visualization of all measurement data
- Customized Reporting

## Room Acoustics Option



- Reverberation Time according to DIN 18041, ISO 3382, ISO 354, etc.
- Room acoustic simulation (Sabine or Eyring)
- Import of user-defined absorber data
- Comparison before / after room treatment
- Analysis of noise spectra and Noise Curves
- Standard-compliant reporting

## Sound Power Reporter Option



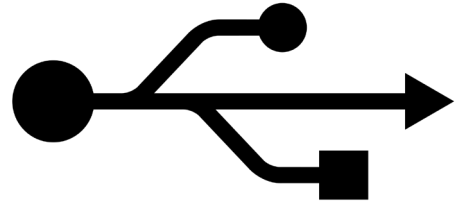
- Visualization of all measurements
- Customized Reporting
- Conforms to standards ISO 3741, ISO 3744, ISO 3746 and ANSI-ASA S12.51, S12.54, S12.56

## Projector PRO Option



- Enables additional functions to the Projector PRO software for live sound monitoring
- “XL View” for large screen dB level display
- “Sound Level Predictor” that indicates the headroom for the next few minutes during the show

## Remote Measurement Option



- Real-time acquisition of XL2 measurement data directly into a computer application via USB
- Adds a real-time acquisition facility to Sound Insulation Reporter software