



Battery-powered LED panel for film, studio and stage usage. Included with HydraPanel are six light modifiers such as Filters, EggCrates and GelHolder. HydraPanel can be mounted with its FlexBase accessory, Babypin and backside magnet. Via ConnectorPlate four panels can be connected to form a bigger panel. For longer installations it can be wired with power and data through an Astera PowerBox.

SPECIFICATIONS



Max 20h



Wireless DMX



IP65



App

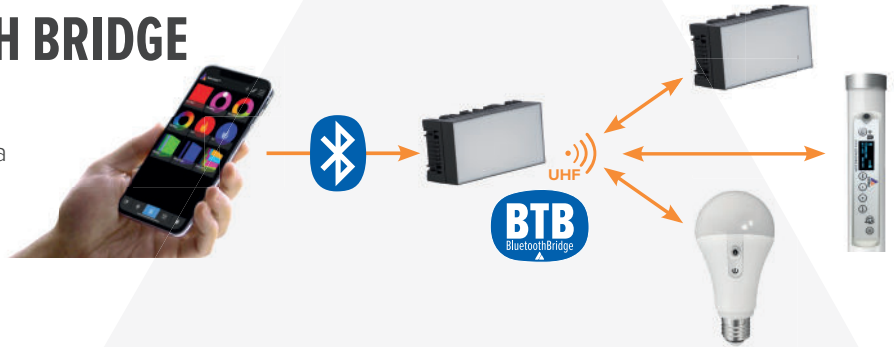
Order Code	FP6
LED Engine	Titan LED Engine
Colors	RGBMintAmber
Total LED Power	25 W
LED Power Draw	17 W
Luminous Flux 3200K	1102 Lumens
Luminous Flux 4000K	1287 Lumens
Luminous Flux 5500K	1298 Lumens
Light Output 3200 K @ 1m	443 Lux
Light Output 4000 K @ 1m	512 Lux
Light Output 5500 K @ 1m	516 Lux
CRI (Ra)/ TLCI 3200- 6500 K*	≥ 96
Beam Angle	110° x 100°
Field Angle	150° x 145°
Strobe	0 - 25 Hz
Pixels	6
Battery Runtime	up to 20 hours
Battery Runtime Max Brightness	1h 45m
Battery Lifetime	70 % after 300 cycles
Charging Time (nominal)	3 hours
DC Input	24VDC - 0.85 A
DC Connector	5,5 mm x 2,1 mm
Wired DMX	Yes Via FP1-PWB/FP3-DTL/PWB2-86
CRMX Receiver	Built-in
BluetoothBridge BTB	Built-in
Wireless Protocols	CRMX, UHF, Bluetooth, WiFi
Wireless Range	CRMX/UHF Up to 300 m / 330 yds Bluetooth Up to 3 m / 3.3 yds
Infrared Control	Yes
ControlSync	Yes
TouchSlider	Yes
Housing Material	Polymer & Metal
IP Rating	IP65
Ambient Operating Temperature	0 - 40 °C / 32 - 104 °F
Weight	604 g / 1.3 lb
Dimensions L x W x D	166 mm x 85 mm x 43,5 mm / 6.53" x 3.34" x 1.71"

RF CHARACTERISTICS

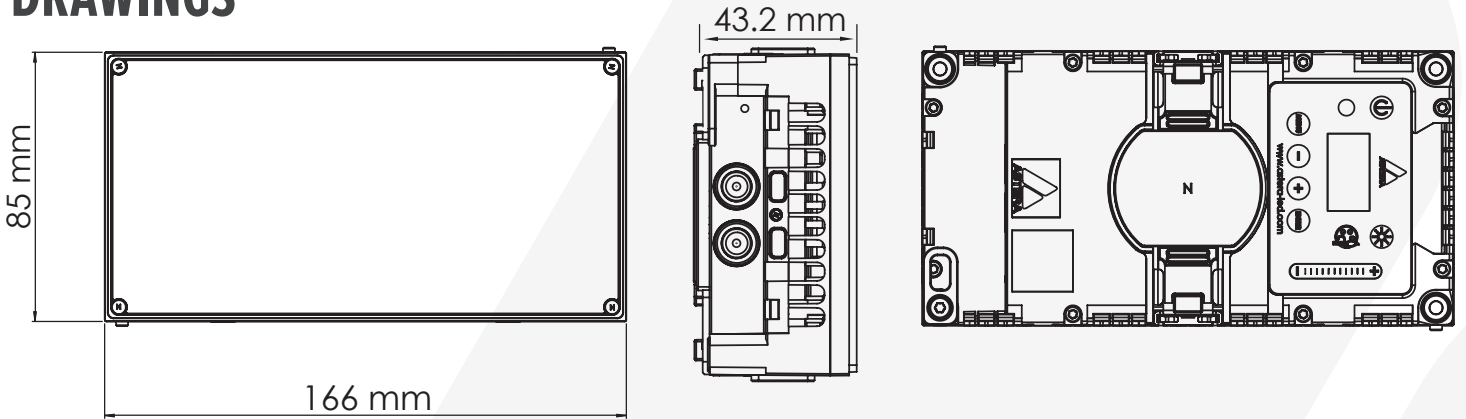
Wireless Modules	EU: UHF (863-870MHz)	USA: UHF (917-922.20MHz)	AUS: UHF (922.30-927.50MHz)	SGP: UHF (920.50-924.50MHz)	
Modulation	FHSS	FHSS	FHSS	FHSS	
ERP (Transmitter)	<25mW	<25mW	<25mW	<25mW	
Channel Count	47	53	53	41	
Wireless Modules	KOR: UHF (917.9-921.5MHz)	RUS: UHF (868.75-869.12MHz)	JPN: UHF (922.80-926.40MHz)	CRMX (2402-2480MHz)	Bluetooth 5.0 LE (2402-2480MHz)
Modulation	FHSS	FHSS	FHSS	FHSS	FHSS
ERP (Transmitter)	<25mW	<25mW	<25mW	-	10mW (BLE)
Channel Count	10	6	19	79	40

HYDRAPANEL AS BLUETOOTH BRIDGE

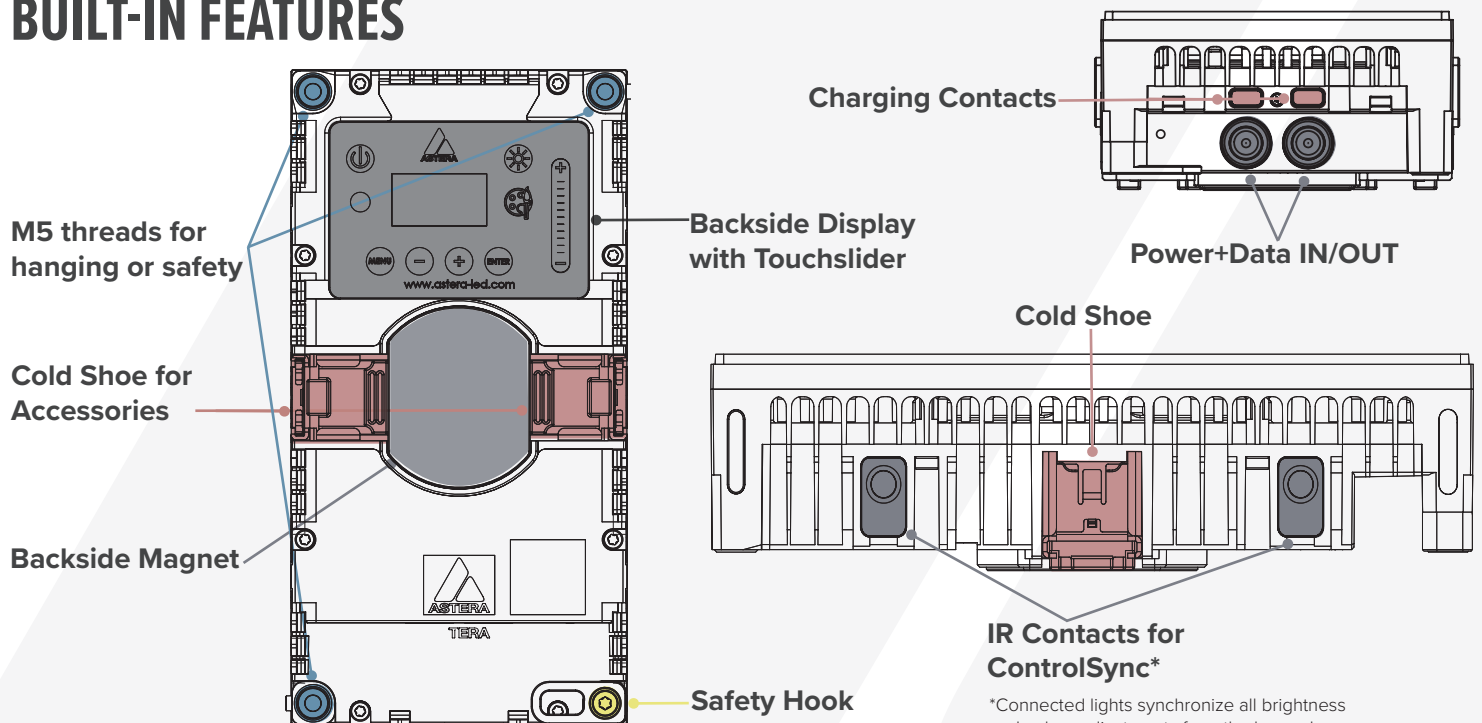
Connect directly to a HydraPanel via Bluetooth. This master light will revert AsteraApp commands to all other HydraPanels and other Astera lights via UHF band.



DRAWINGS



BUILT-IN FEATURES



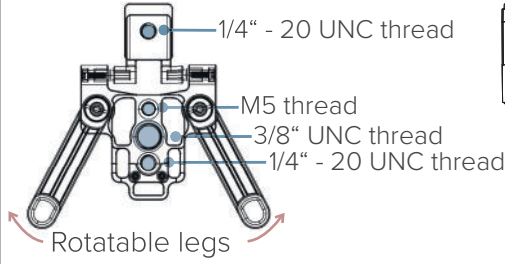
*Connected lights synchronize all brightness and colour adjustments from the keypad.

ACCESSORIES

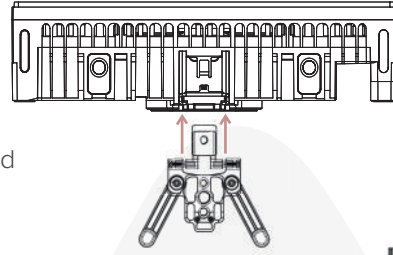
FlexBase
FP6-FB



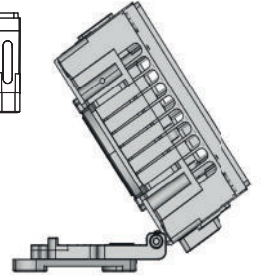
Mounting points



Slide into Cold Shoe



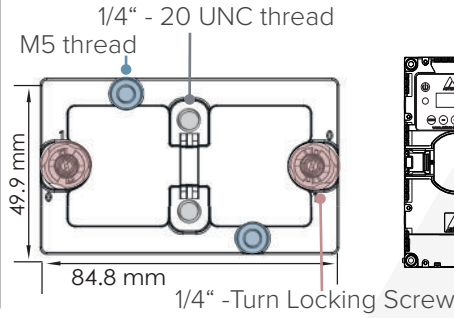
Tiltable



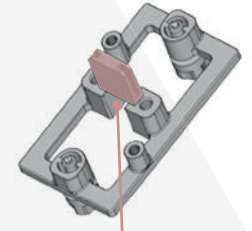
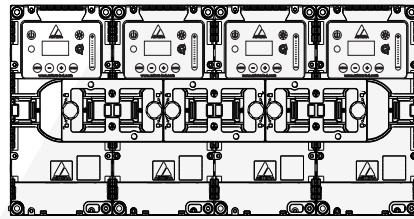
ConnectorPlate
FP6-CP



Dimensions



Connect up to 4 HydraPanels



Connector for Cold Shoe

BabyPin 1/4"
AX-BBP-1/4



200 mm Power / DataCombination Cable
PWB-CAB-0.2



Power Supply for Helios/ Titan Tube
FP1-CHR



Power Supply for Hyperion Tube
FP1-CHR



EyeBolt
FP1-EBLT



Snapbag
SBATHY11



Light modifiers
SoftFrame 100
FP6-SF-100



Intensifier 80
FP6-INT-80



Kits empty
Single Unit Case
FP6-CSE-1



Kits full
Single Unit Kit
FP6-SET-1



EggCrate 40
FP6-EGC-40



EggCrate 60
FP6-EGC-60



Charging Case for 4
FP6-CHRCSE-4



Kit for 4
FP6-SET-4



DiffusorSheet 100
FP6-DS-100

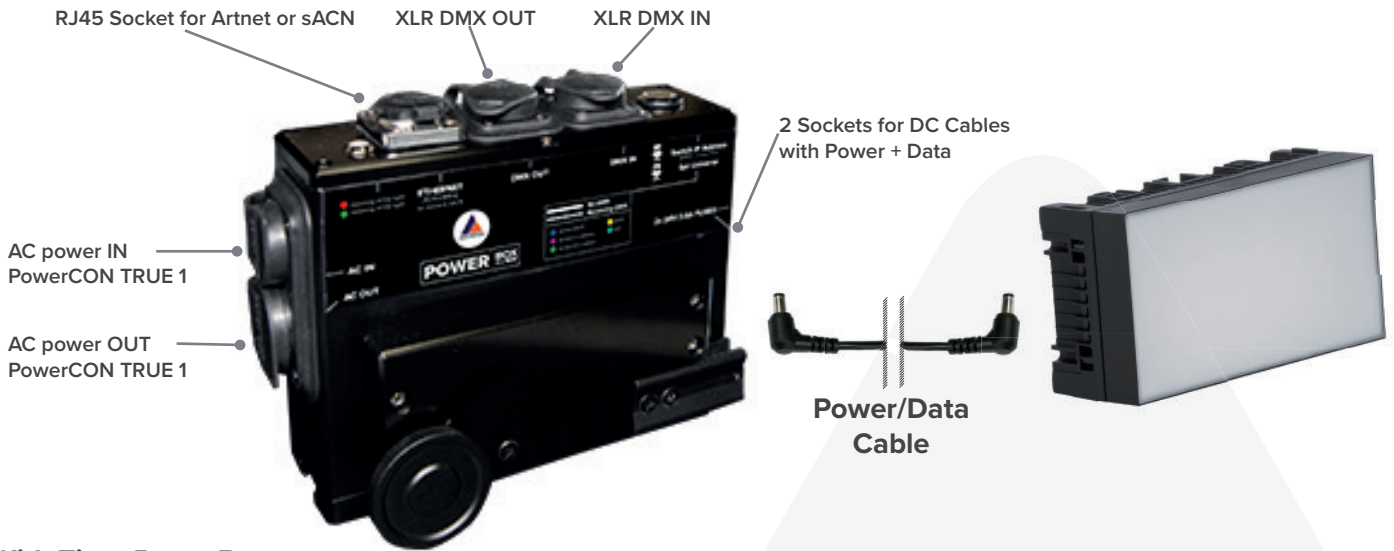


GelHolder
FP6-GH



CHARGING & CONNECTING

With PowerBox 2x86 (PWB-2-86)



With Titan PowerBox (FP1-PWB)

